

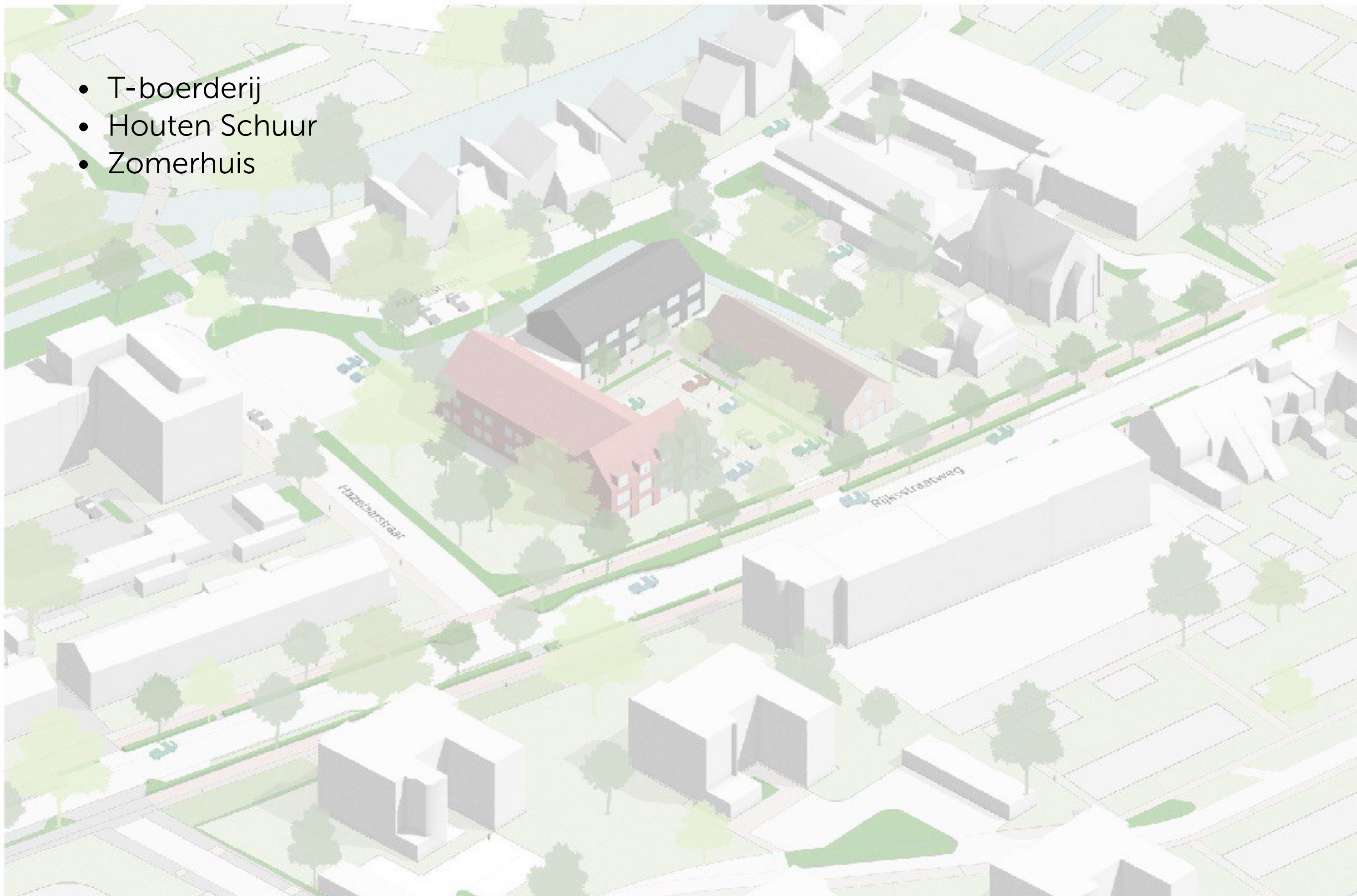


Nieuw Groot Giessenhof

Kijkje in de keuken van de architect

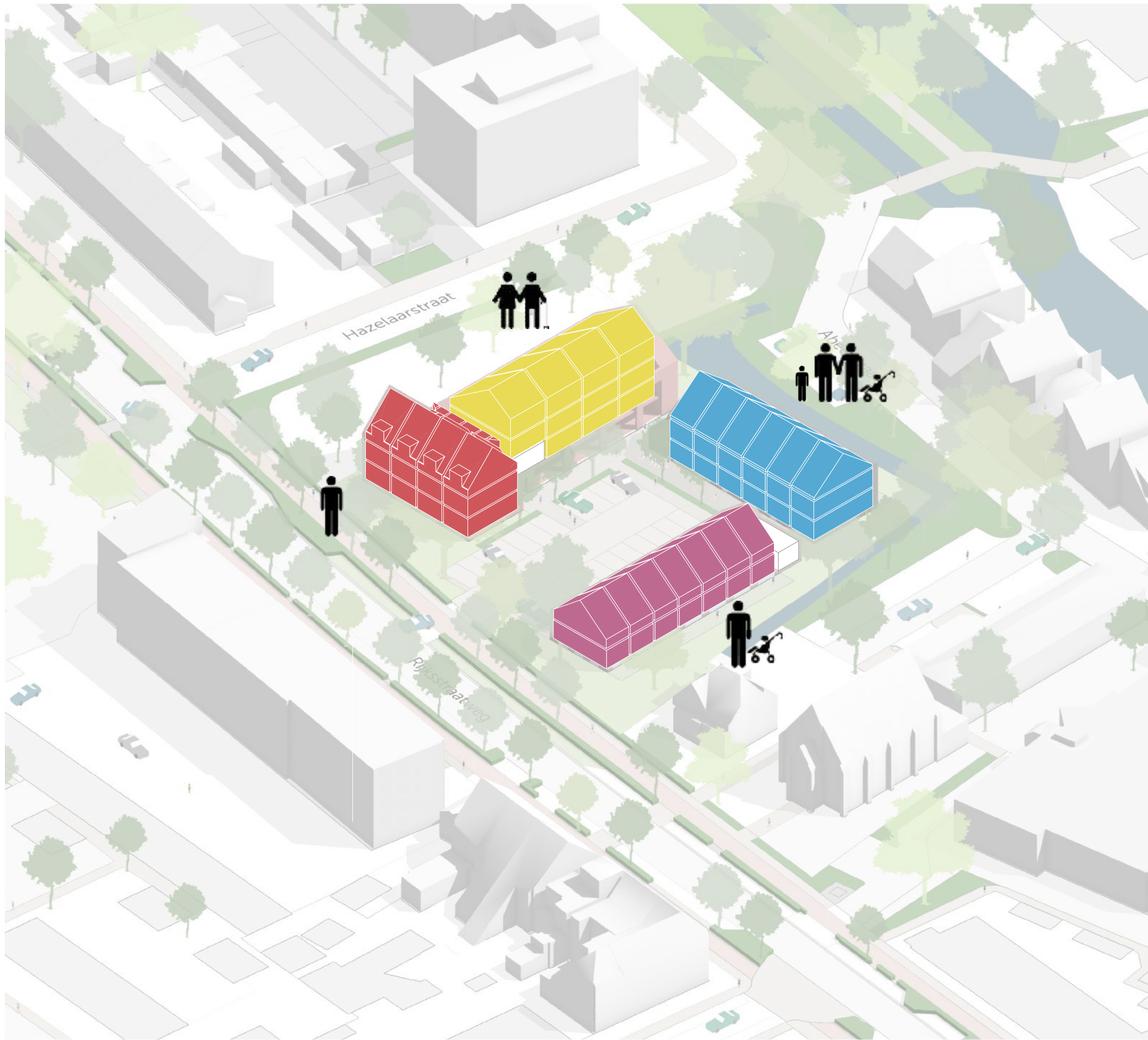
23 mei 2022

- T-boerderij
- Houten Schuur
- Zomerhuis

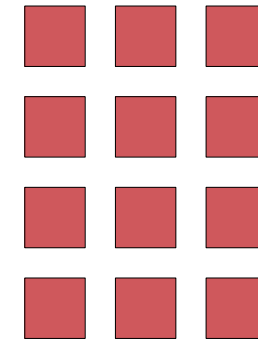




Vogelvlucht

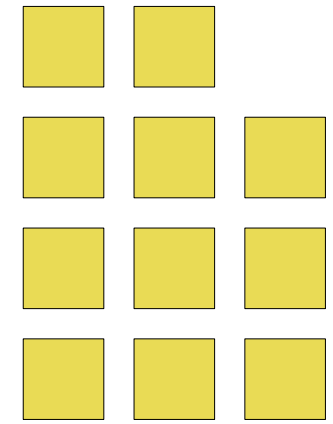


36 woningen



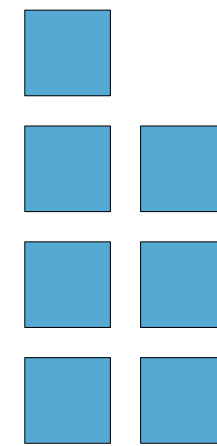
12x
studio

ca. 36 m²



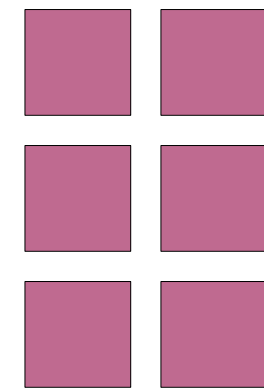
11x
twee- en driekamerappartementen

ca. 62 m²



7x
grondgebonden
(klein)

70 m²

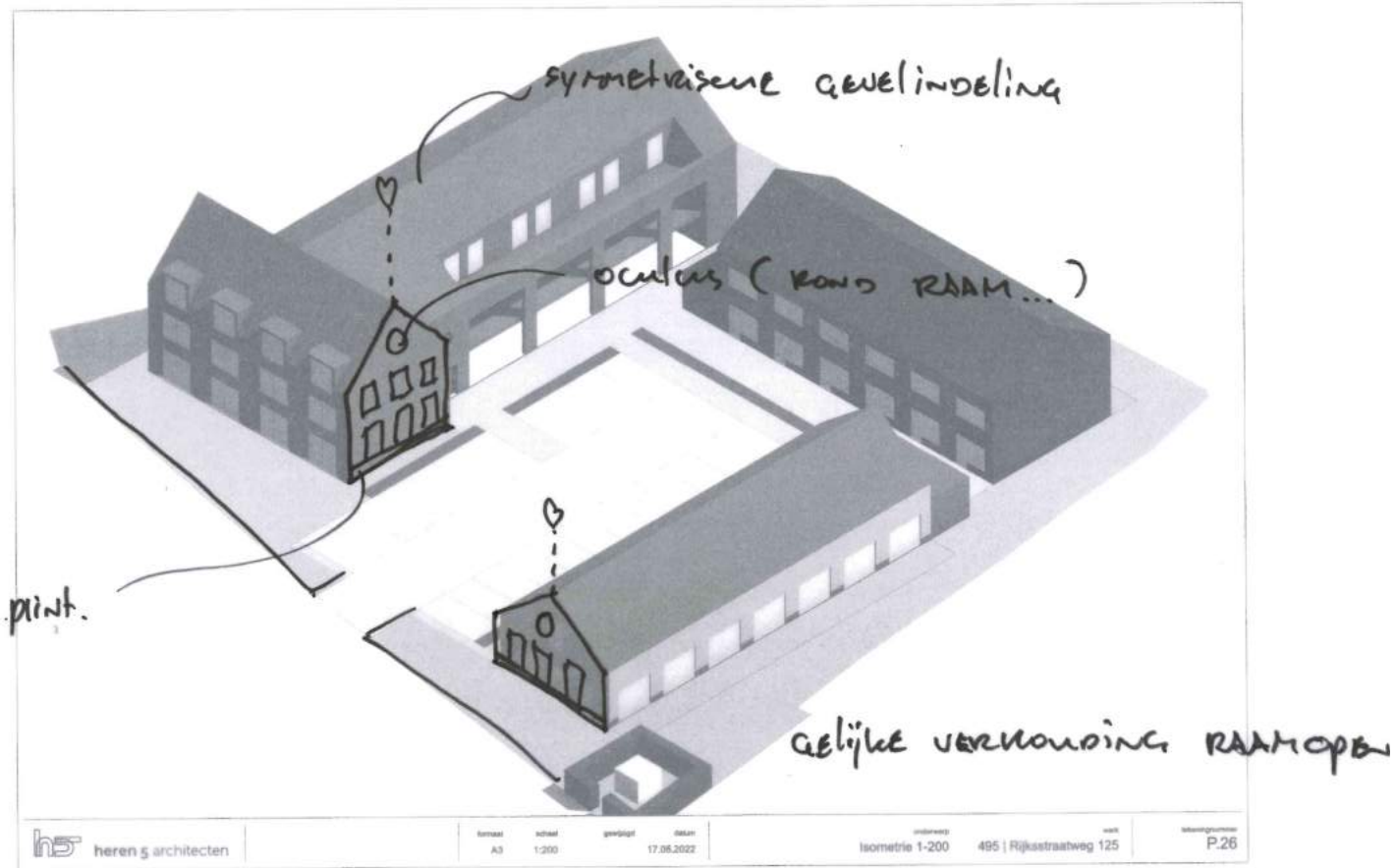


6x
grondgebonden (groot)

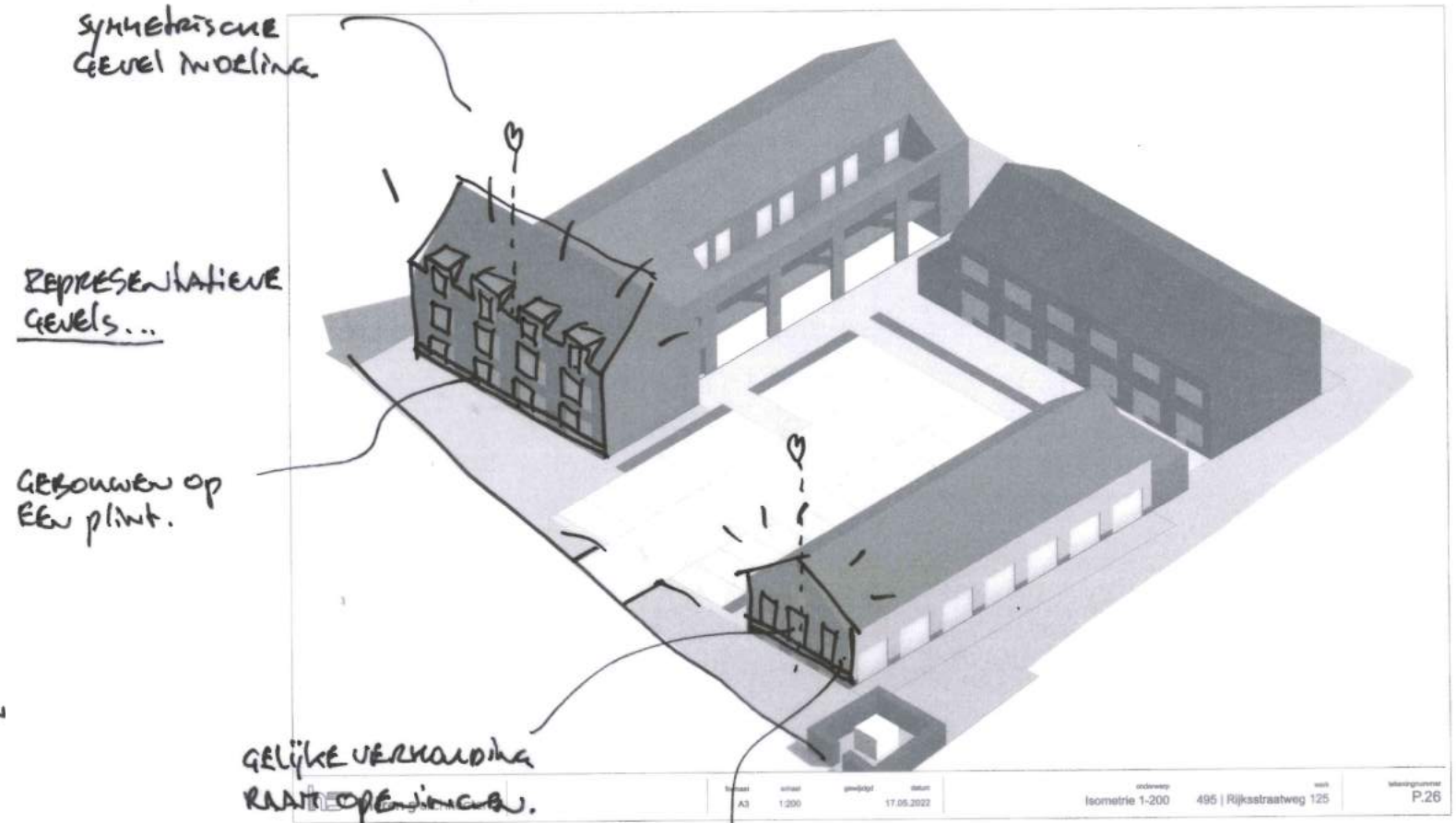
110 m²

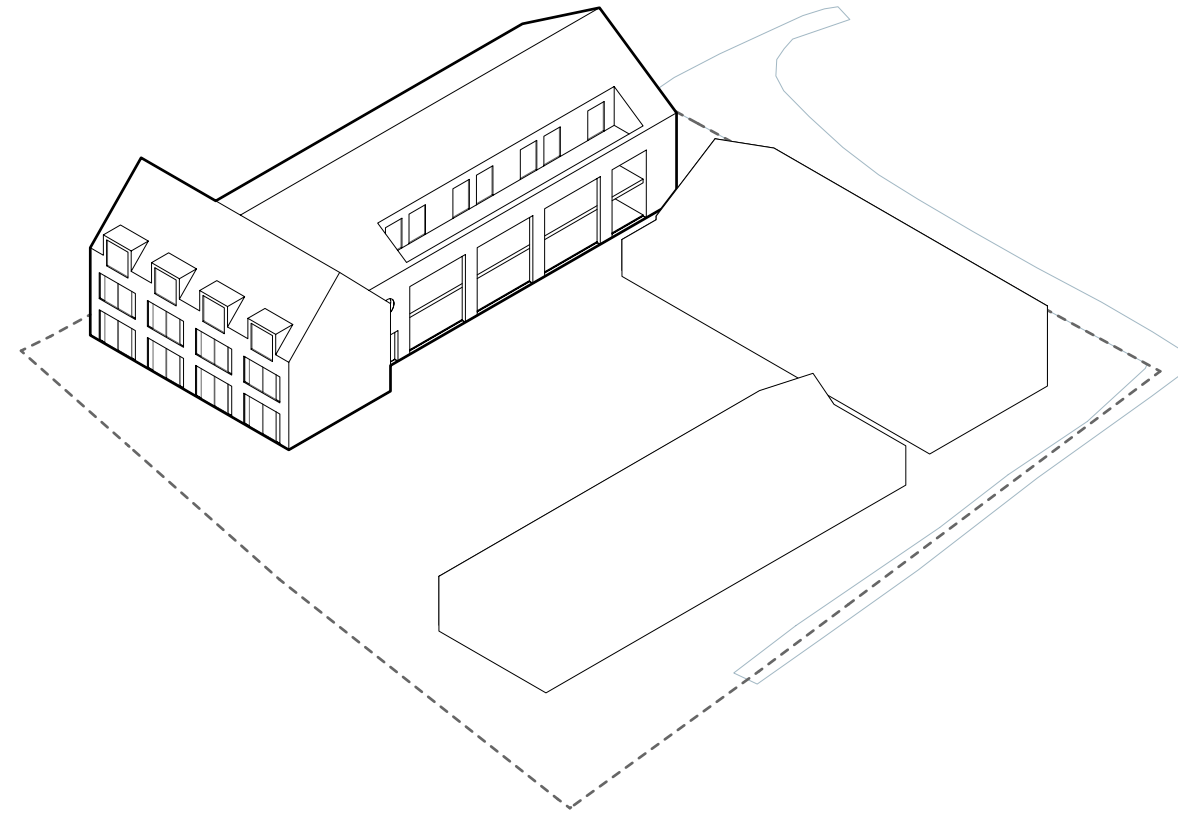


Situatie Nieuw Groot Giessenhof



Familie van topgevels



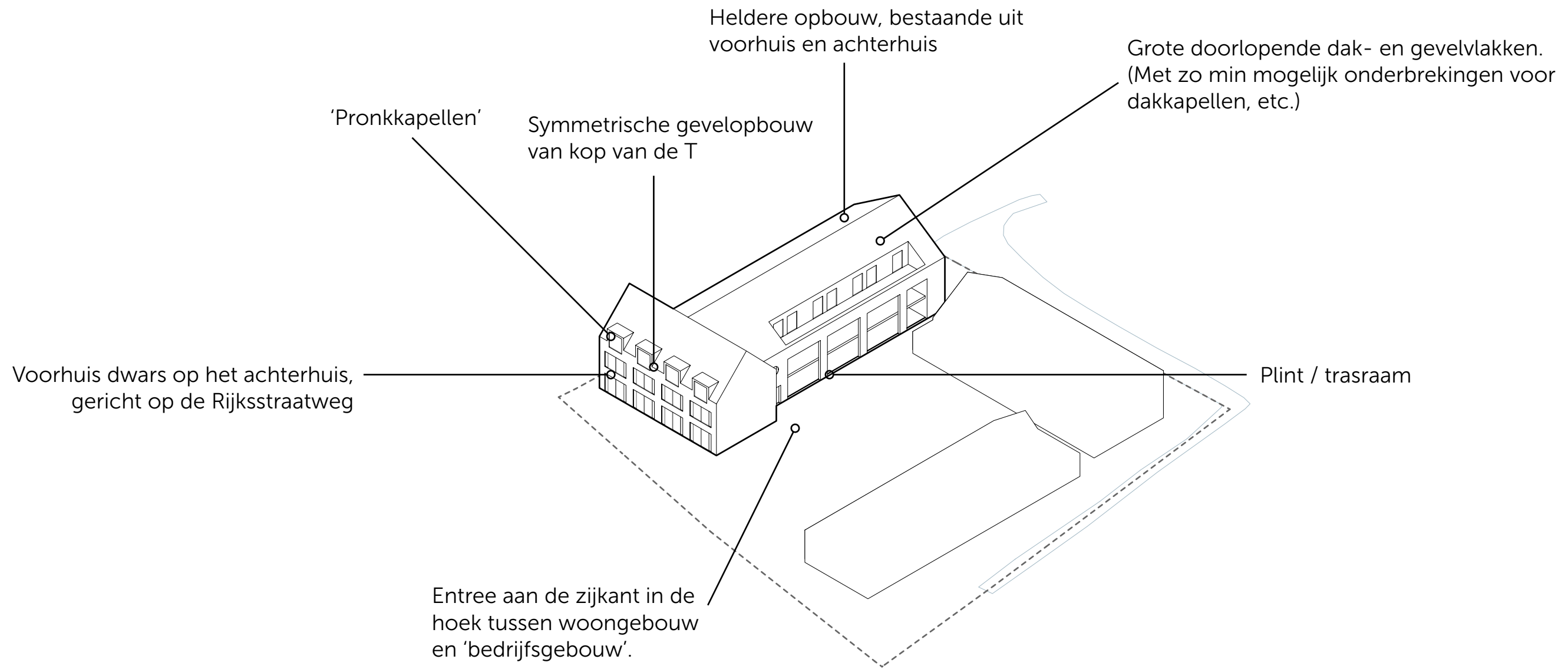


T-boerderij



Referenties T-boerderij





Verbijzondering entree



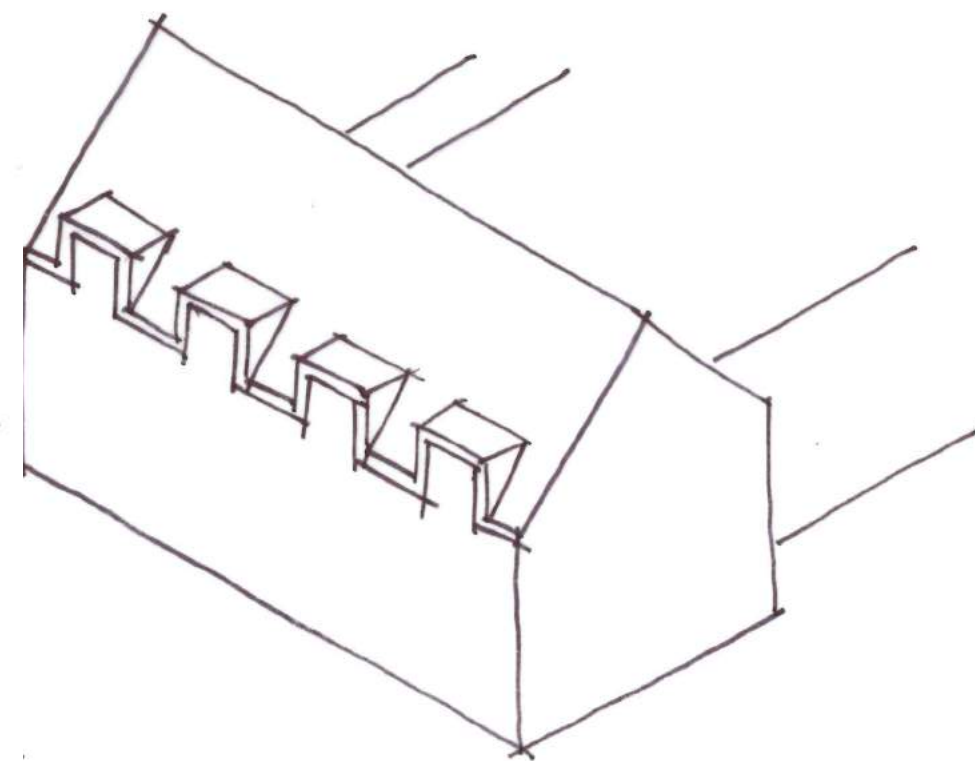
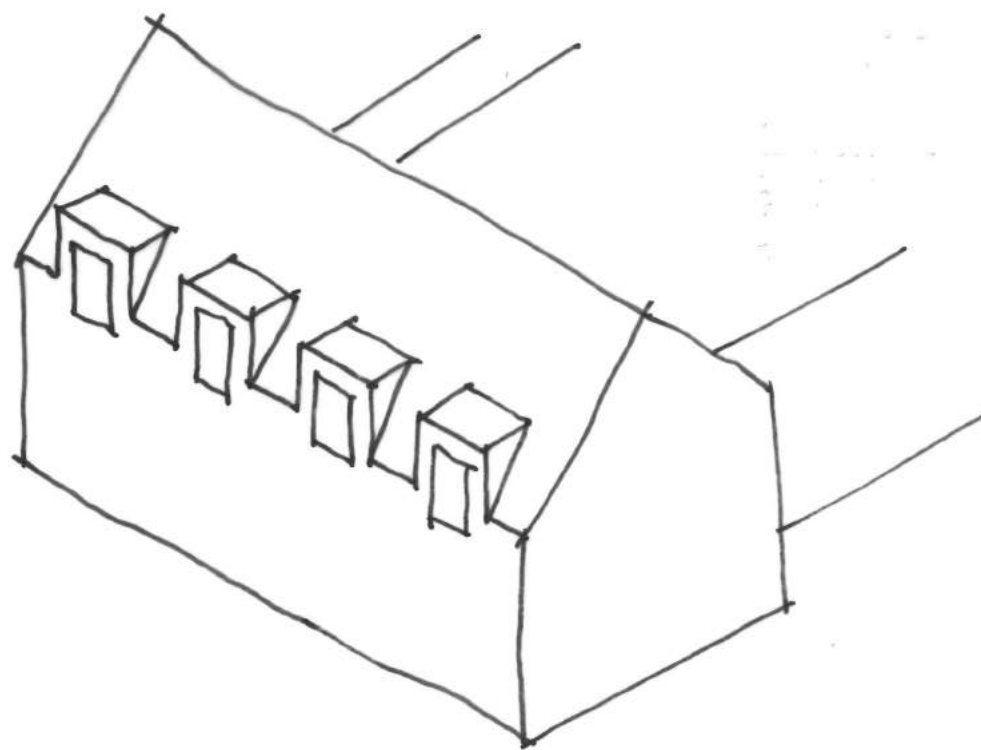
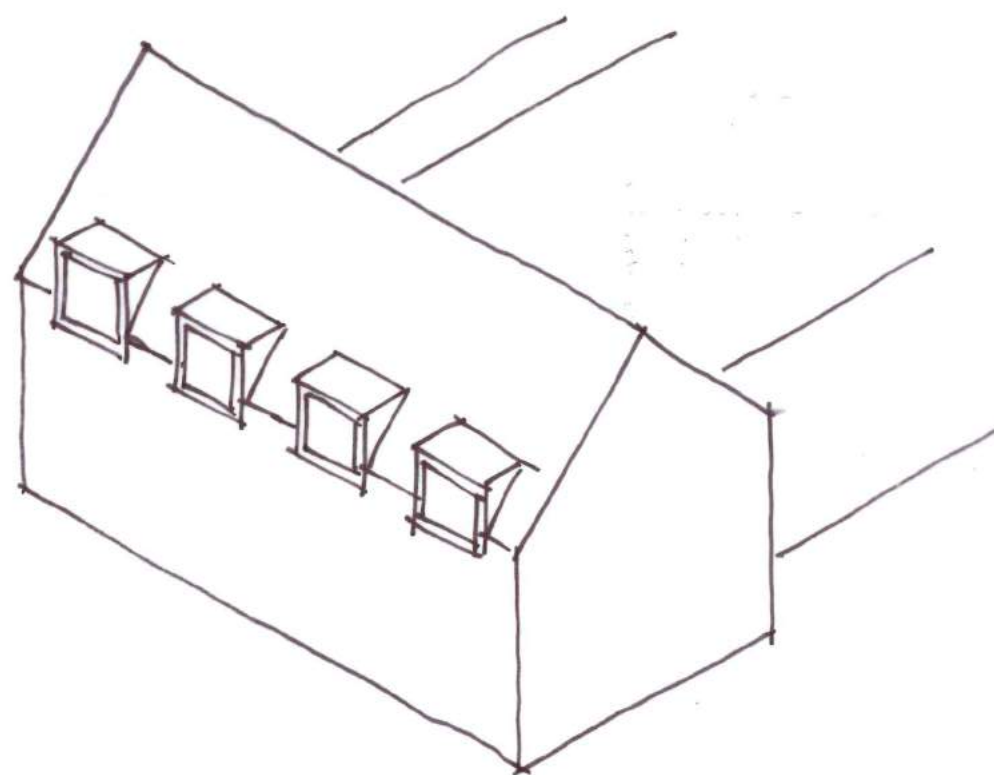
Plint / trasraam



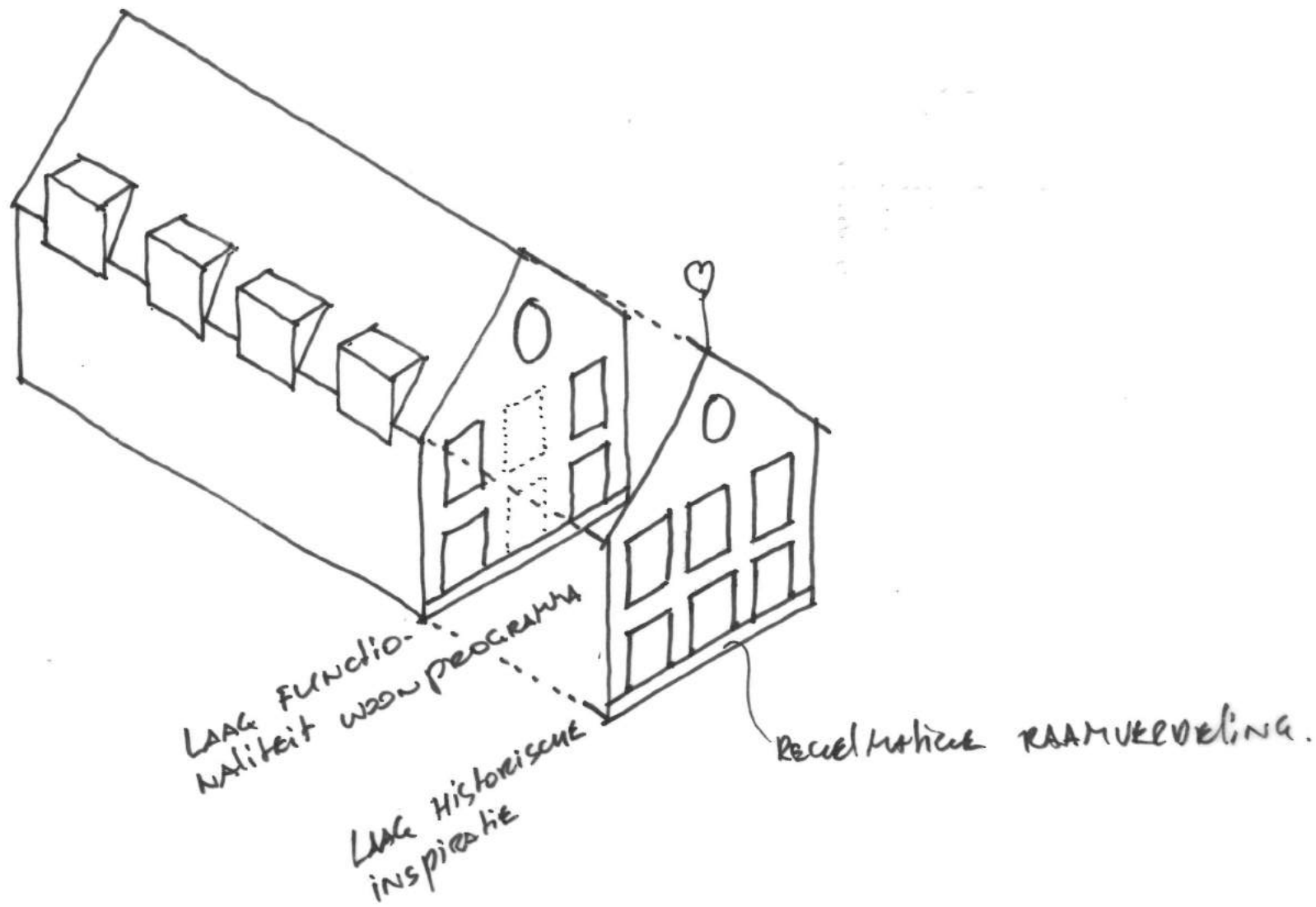
'Pronkkapellen'



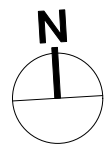
Metselwerk-accents



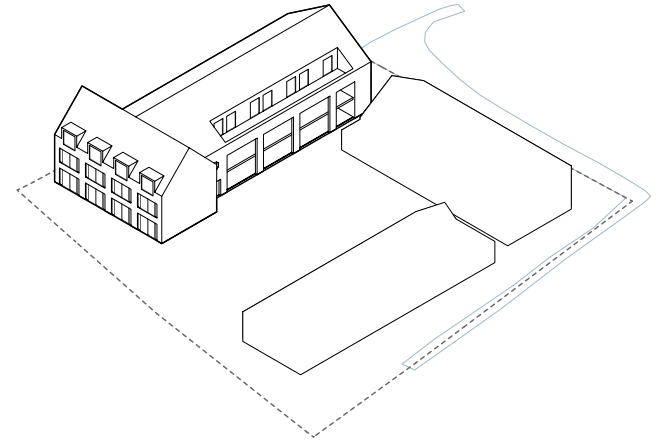
Omgang muurkapellen



Historische inspiratie versus functionaliteit programma

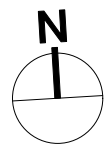
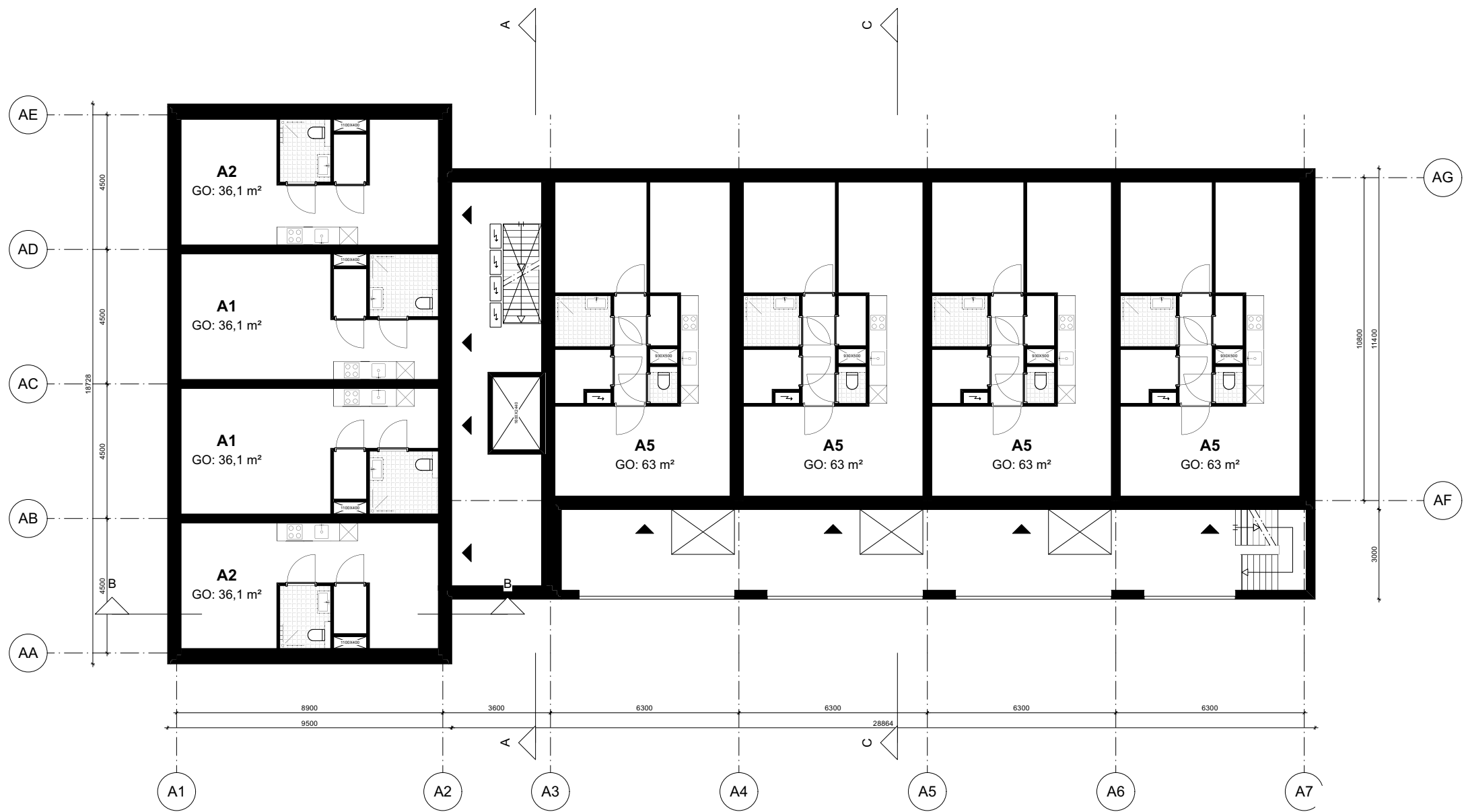


Blok A - Begane grond

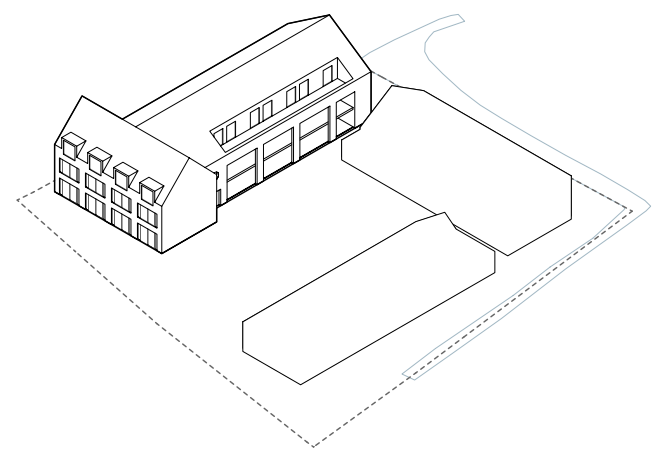


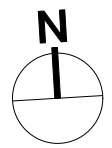
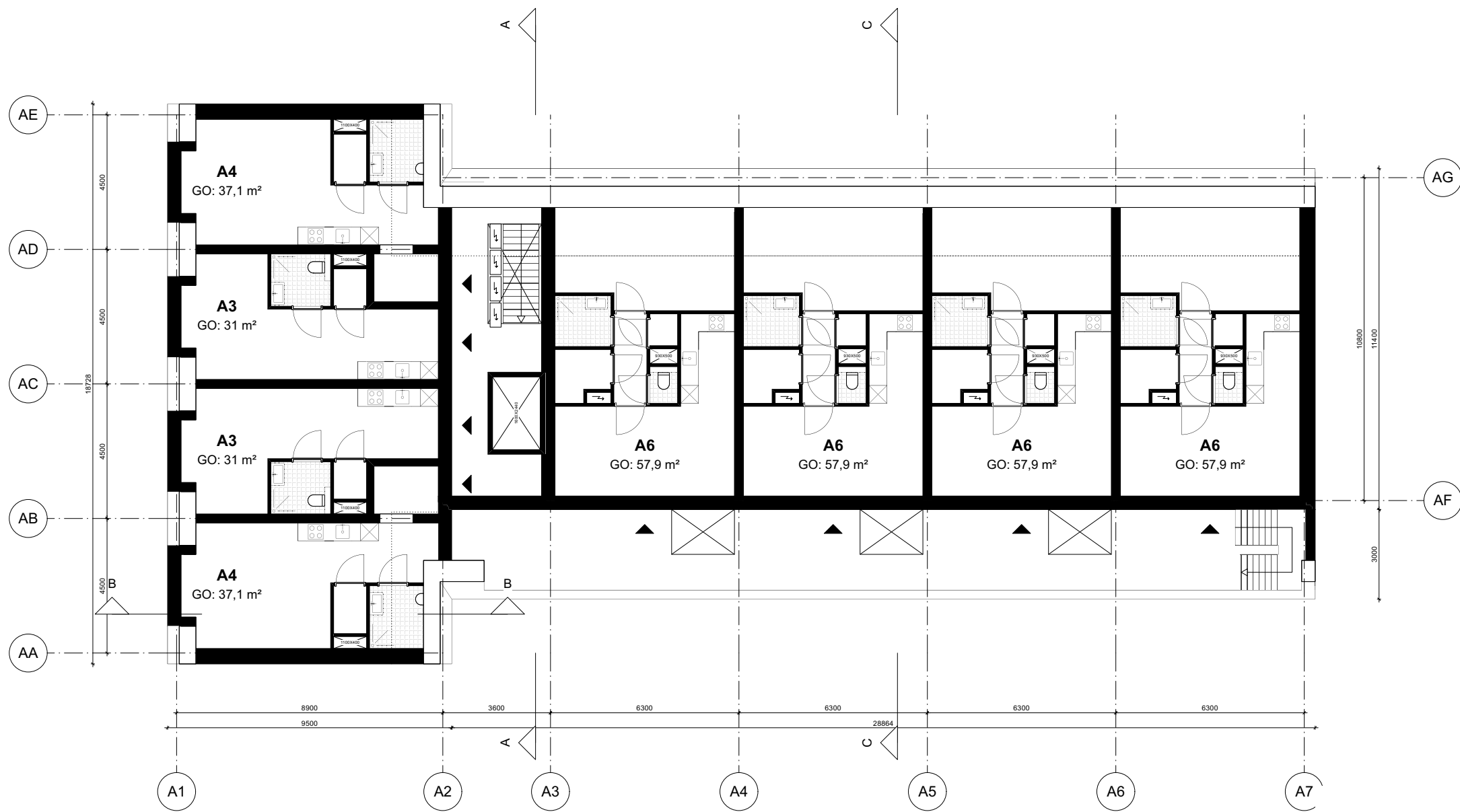
T-boerderij - plattegrond



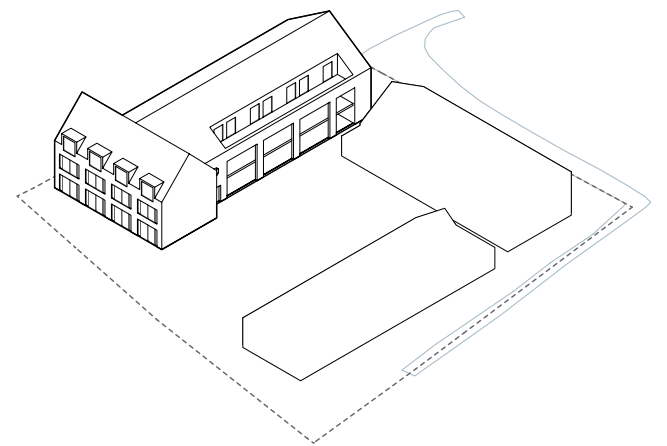


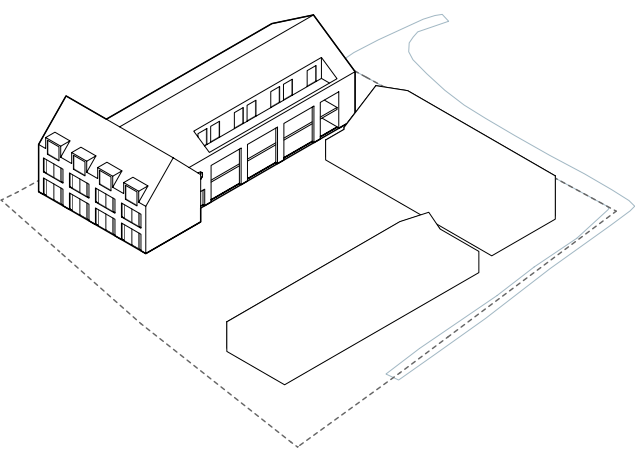
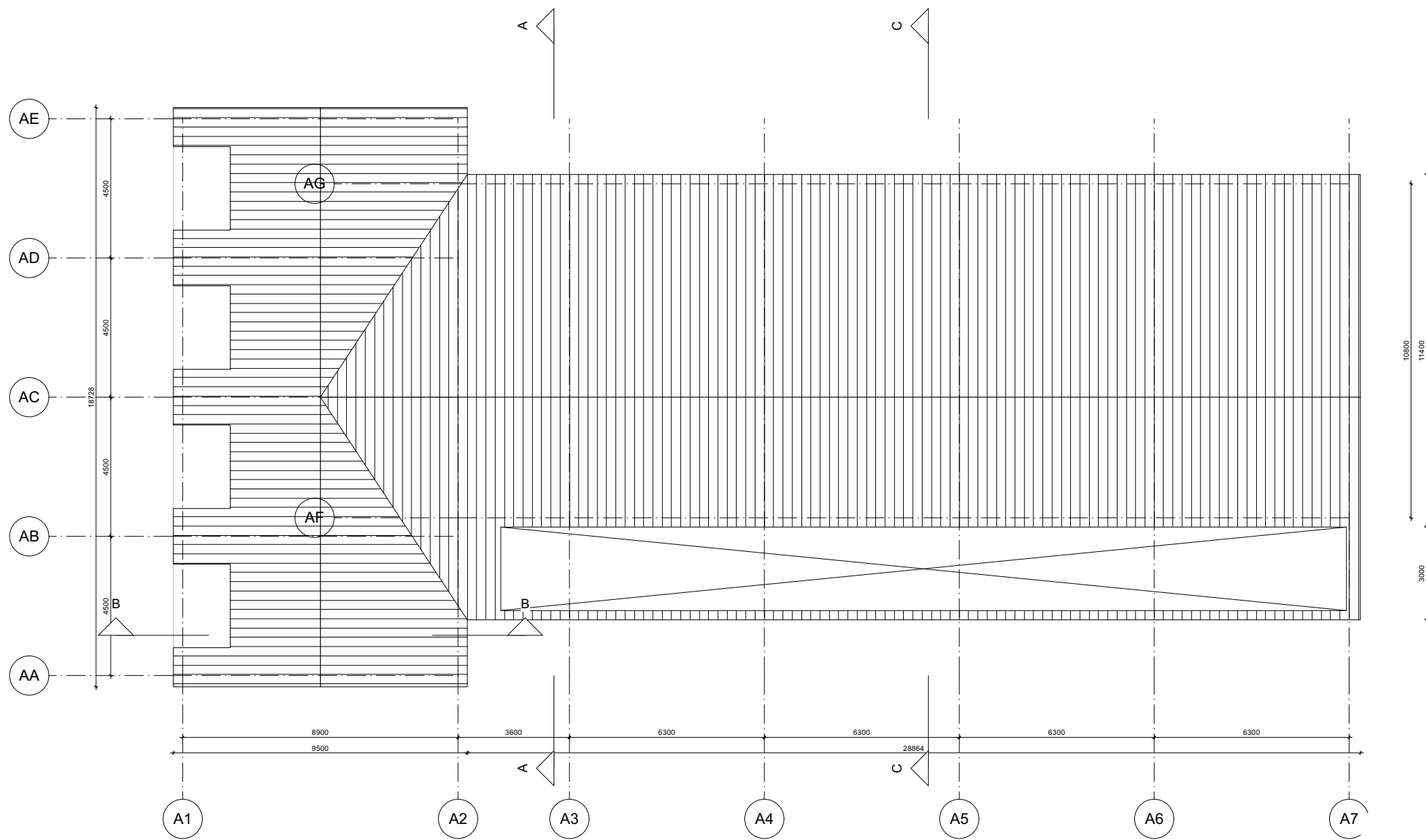
Blok A - Eerste verdieping





Blok A - Tweede verdieping





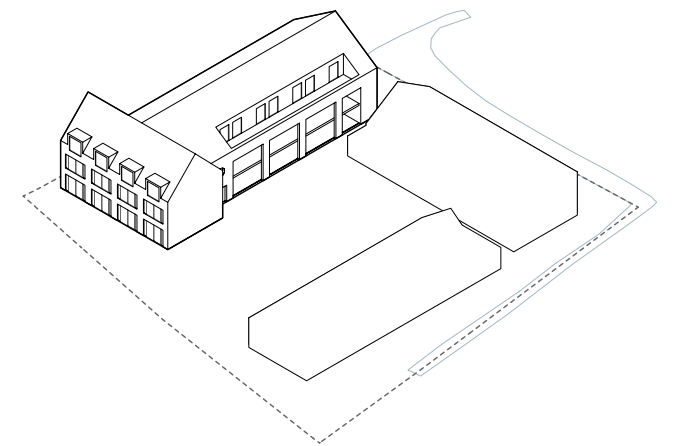
Blok A - Dakaanzicht

T-boerderij - plattegrond



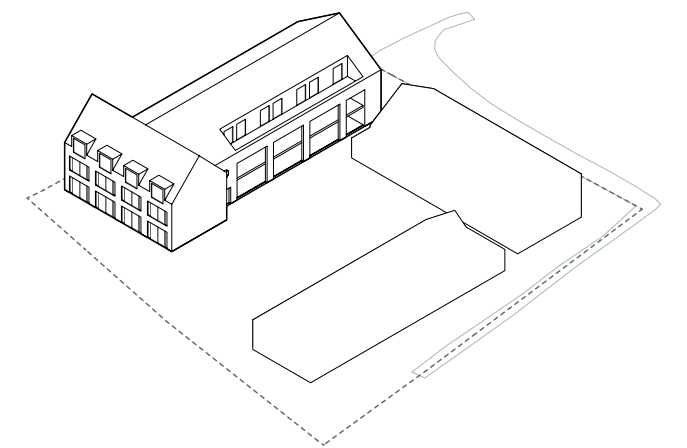


Westgevel



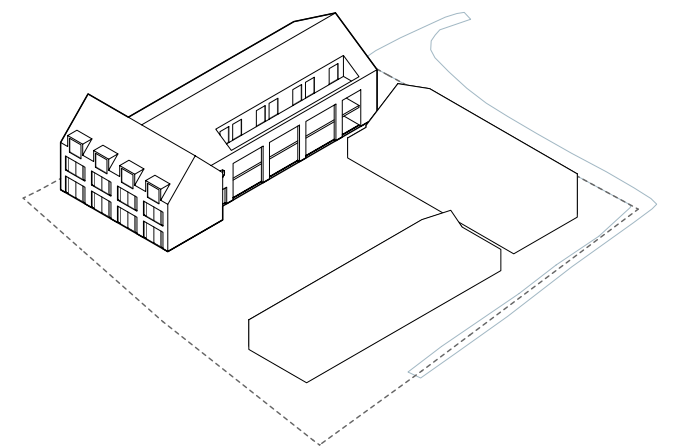
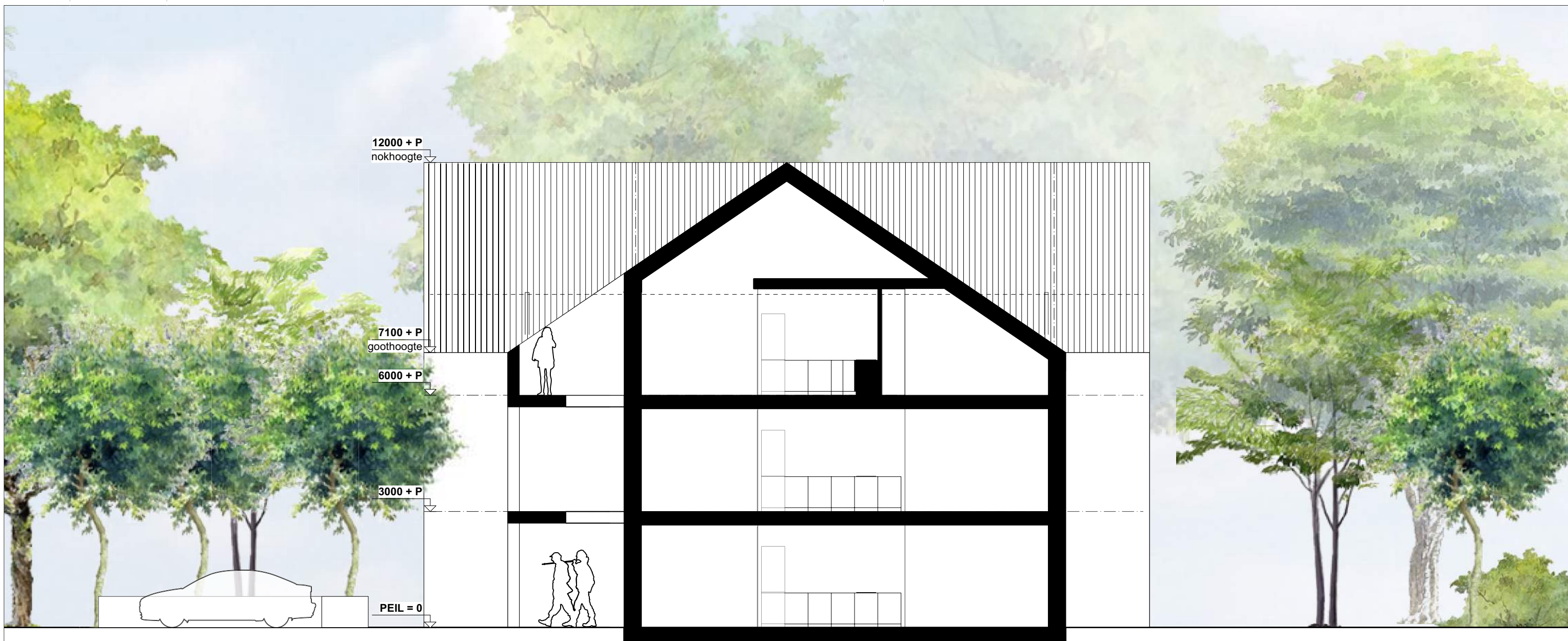


Zuidgevel



T-boerderij - gevel erf

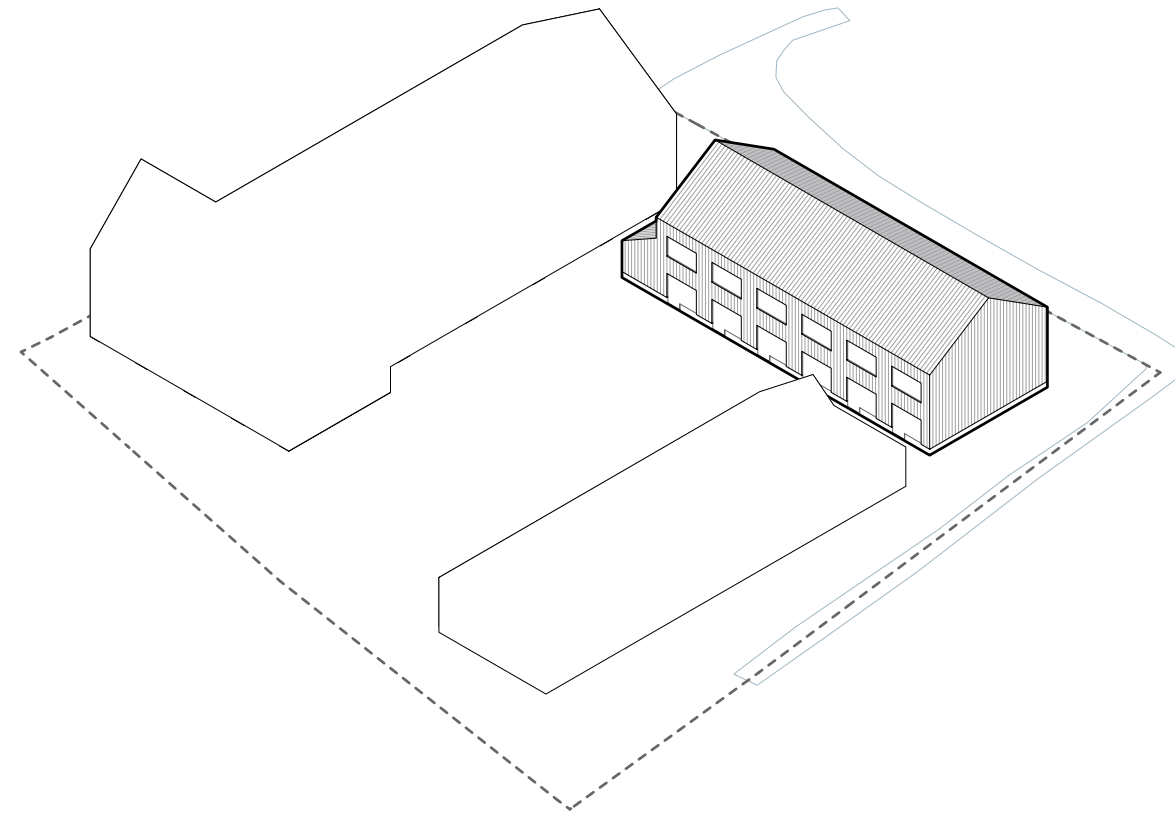




T-boerderij - doorsnede



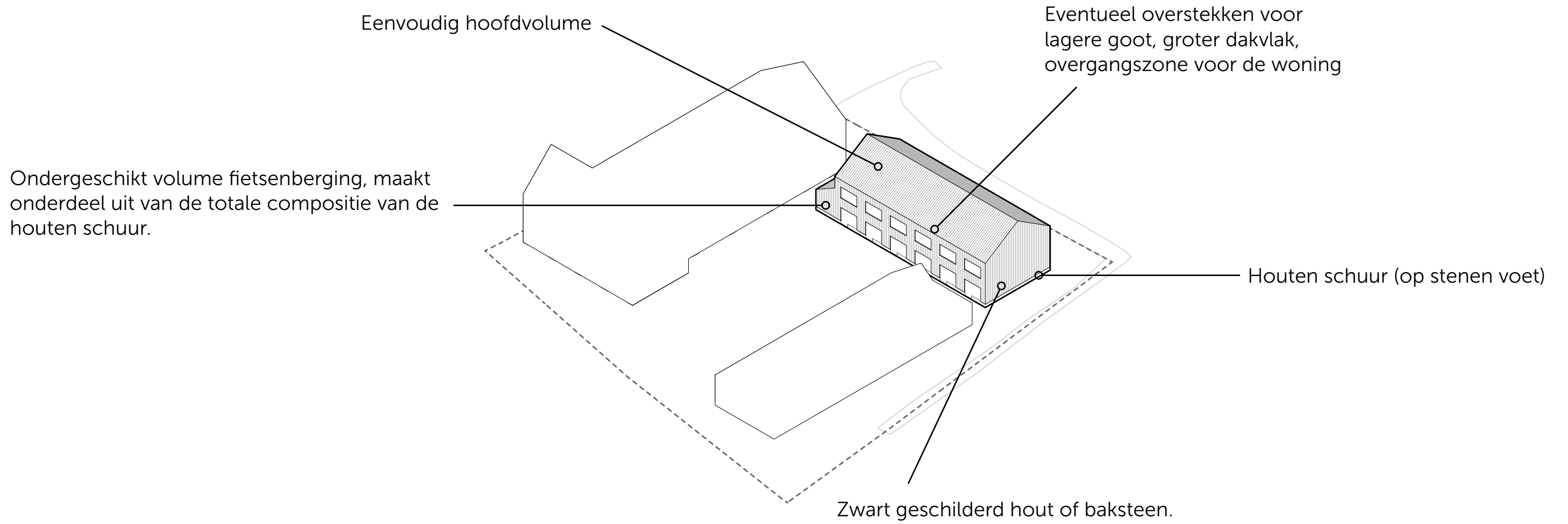
Hof van Hoytema: leefgalerij



Houten schuur



Referenties houten schuur



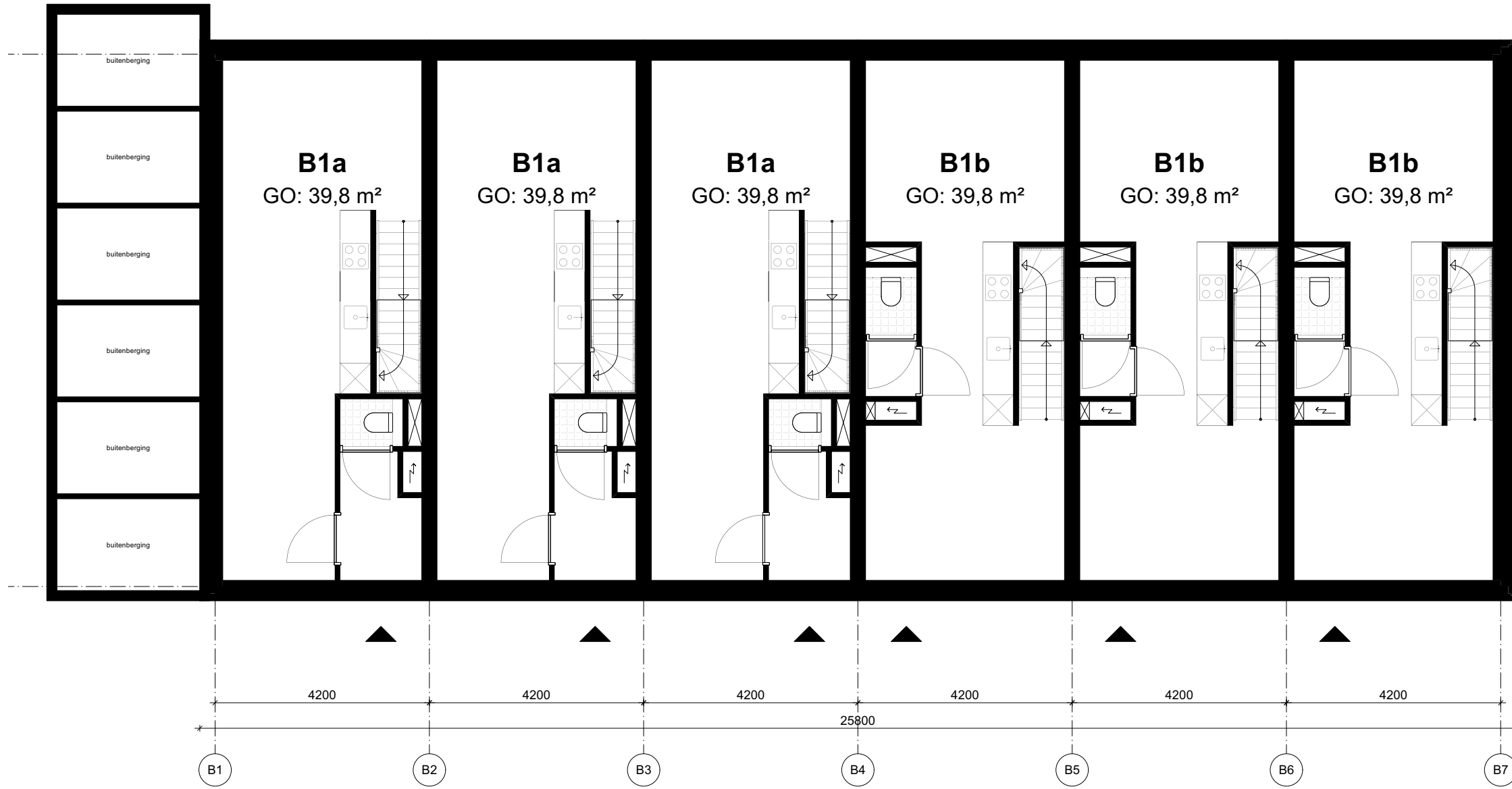
Houten schuur (op stenen voet)



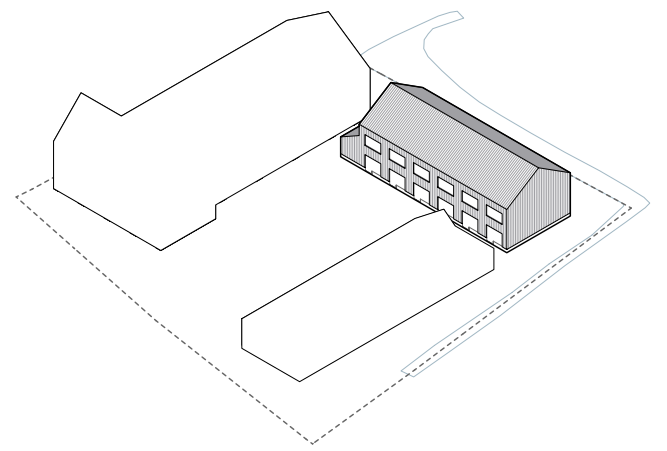
Fietsenberging is onderdeel van hoofdvolume



Houten schuur

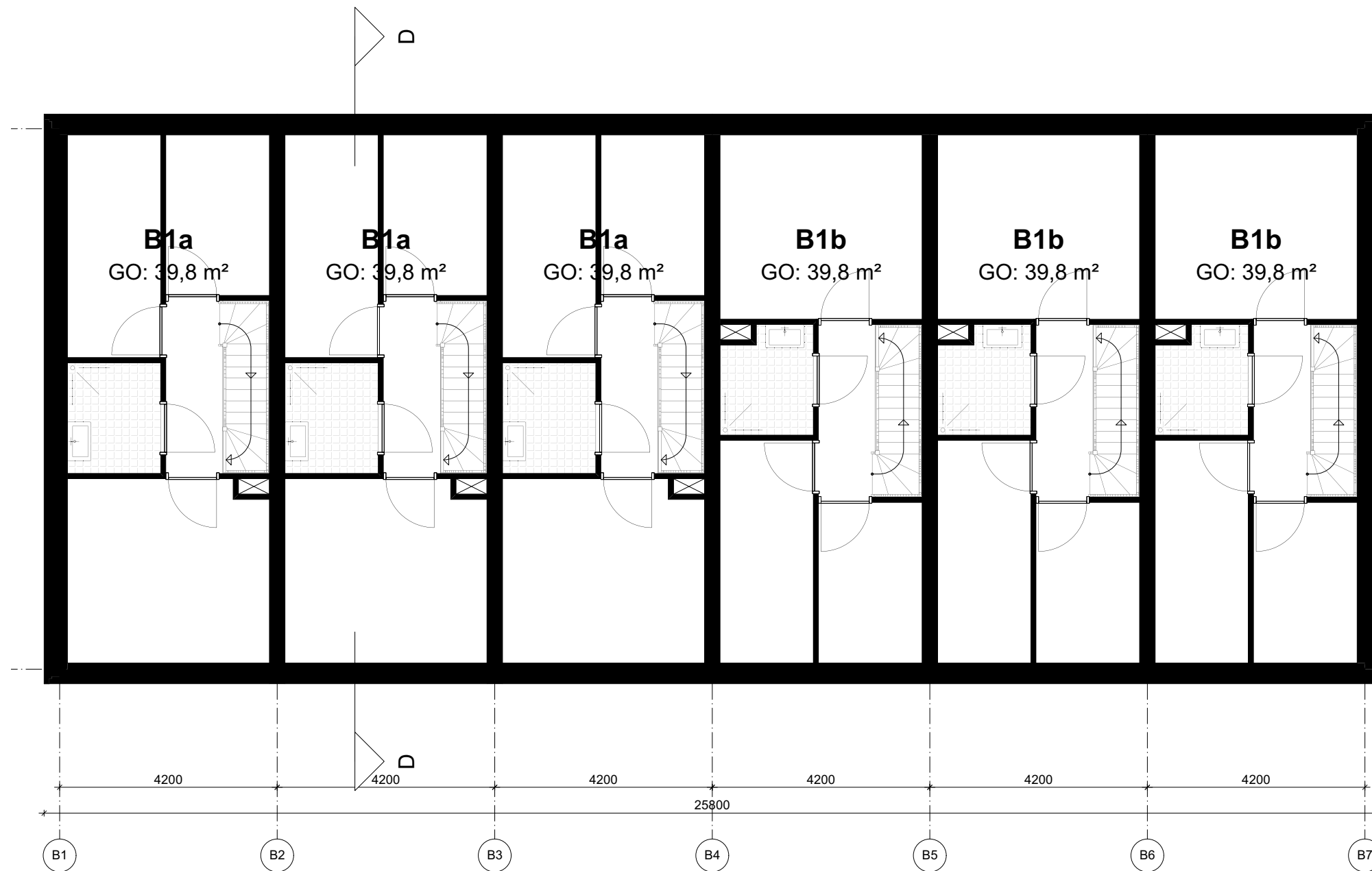


Blok B - Begane grond

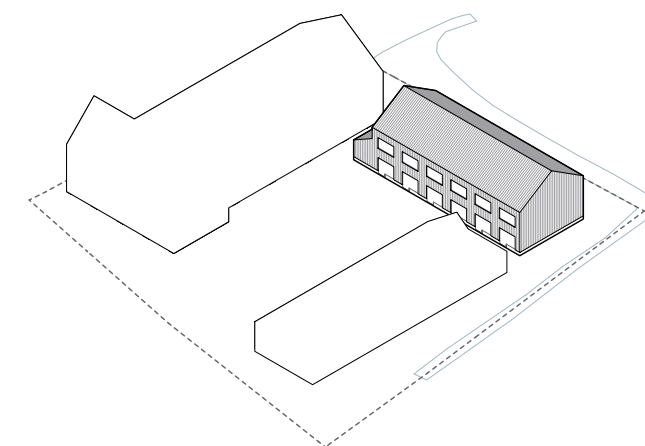


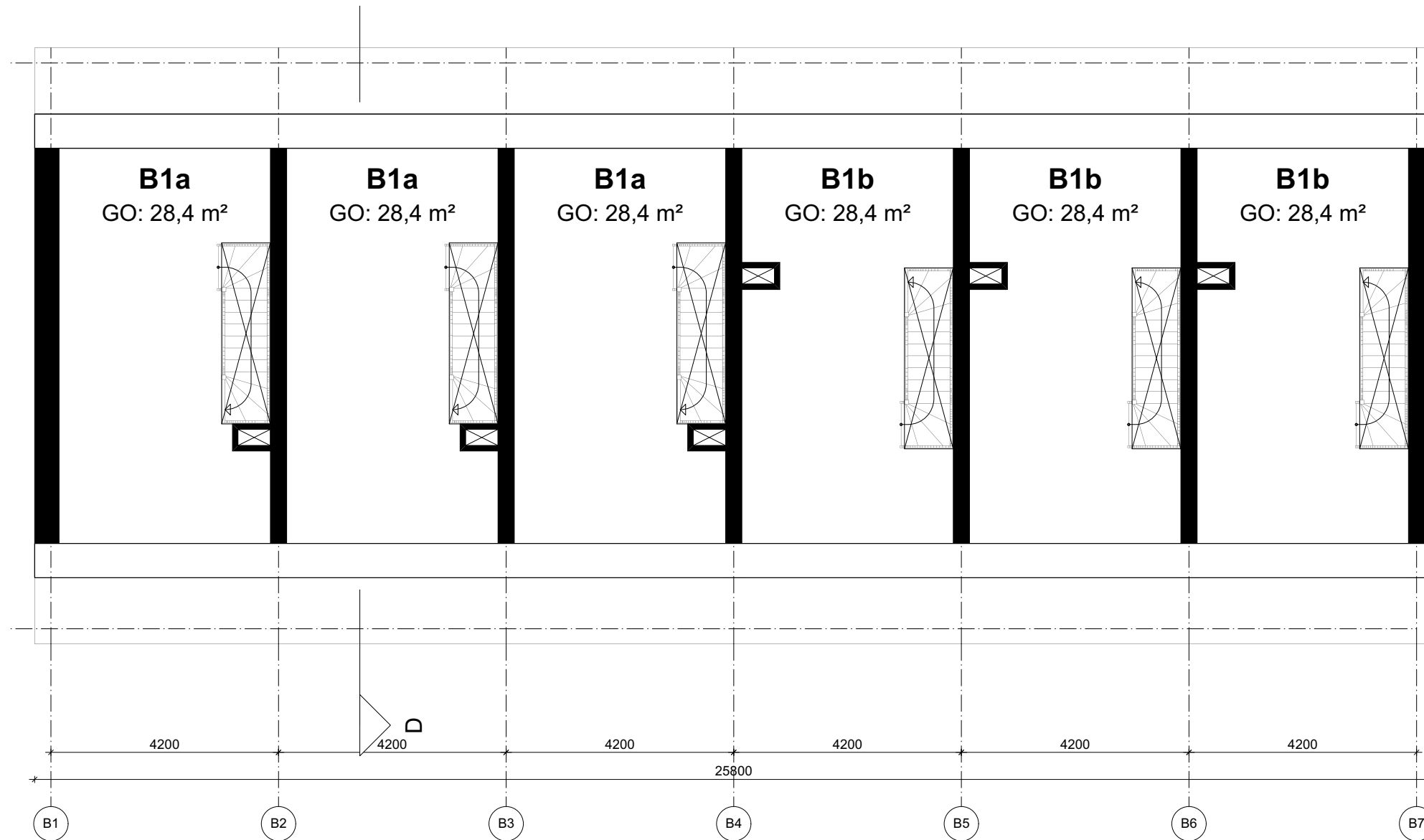
Houten schuur - plattegrond



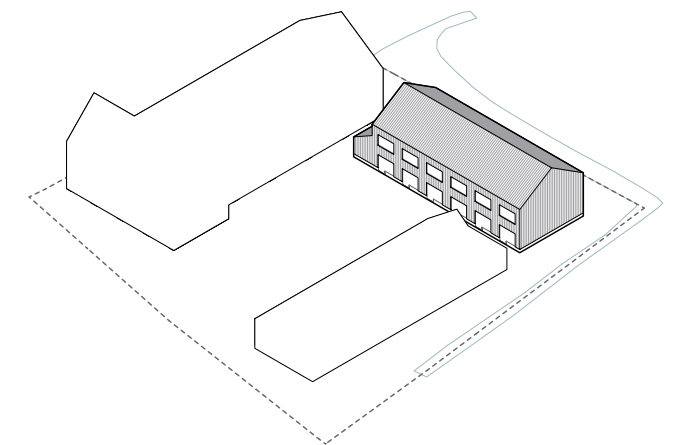


Blok B - Eerste verdieping



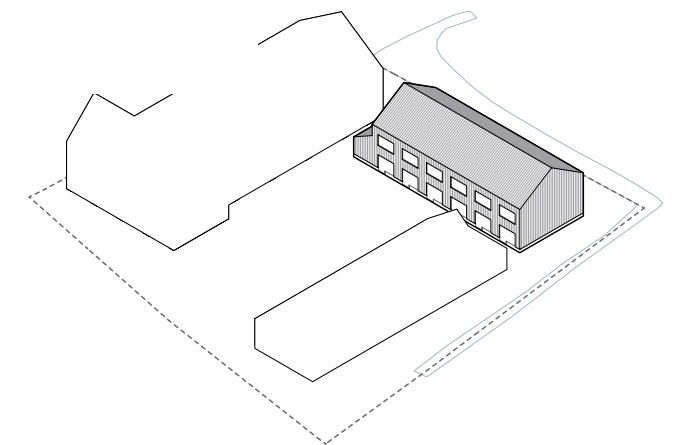


Blok B - Tweede verdieping



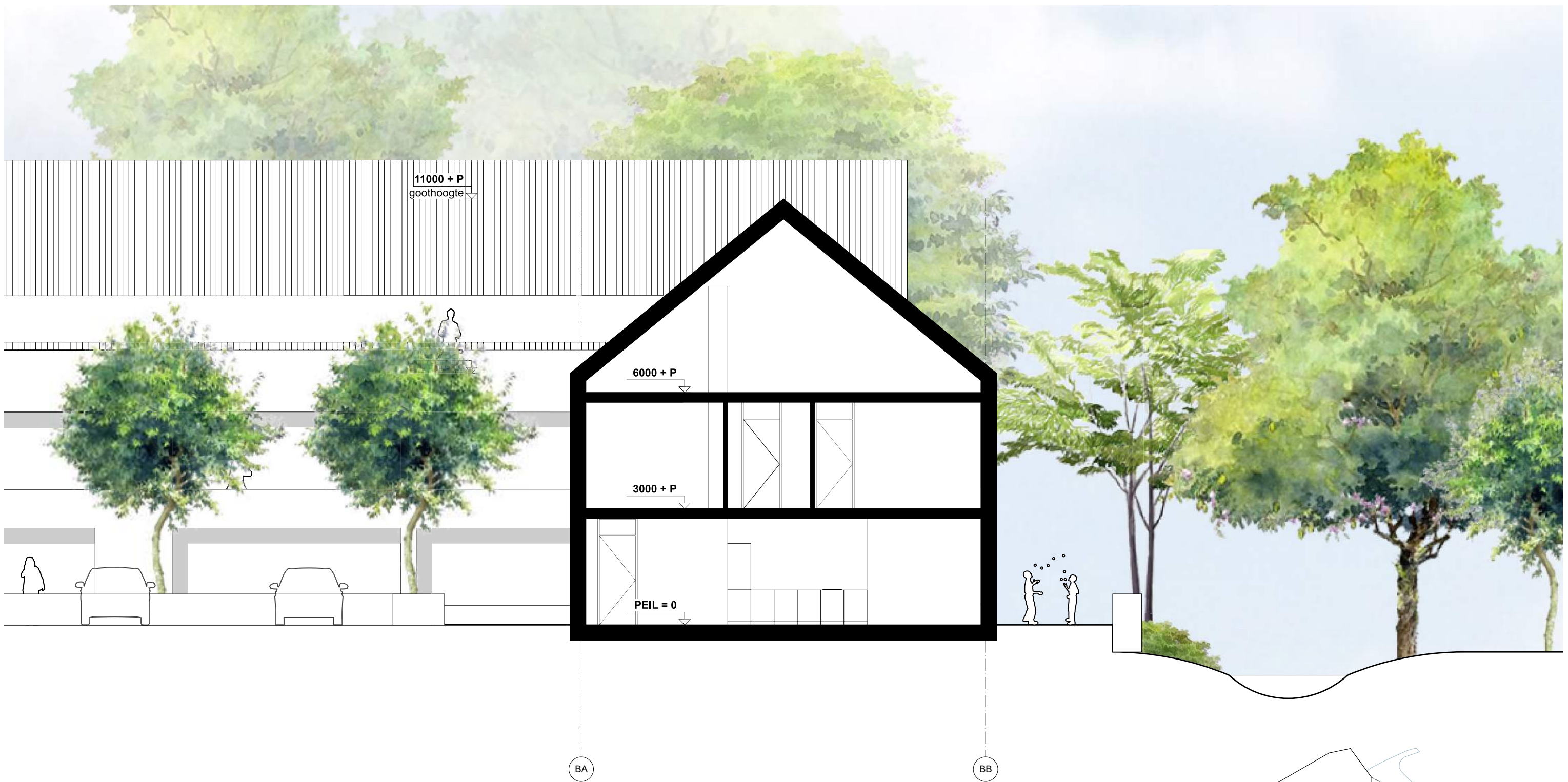


Oostgevel

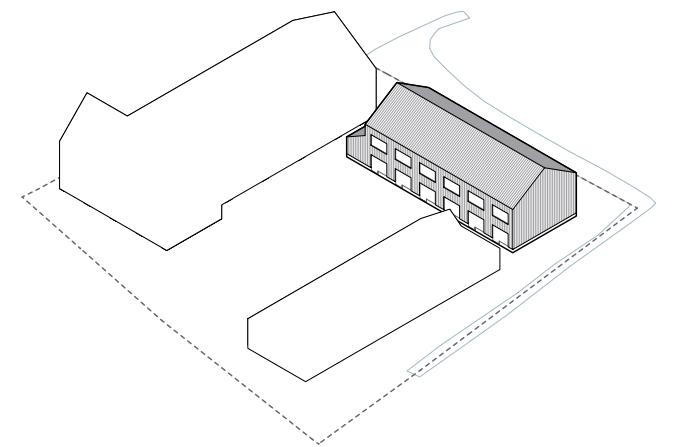






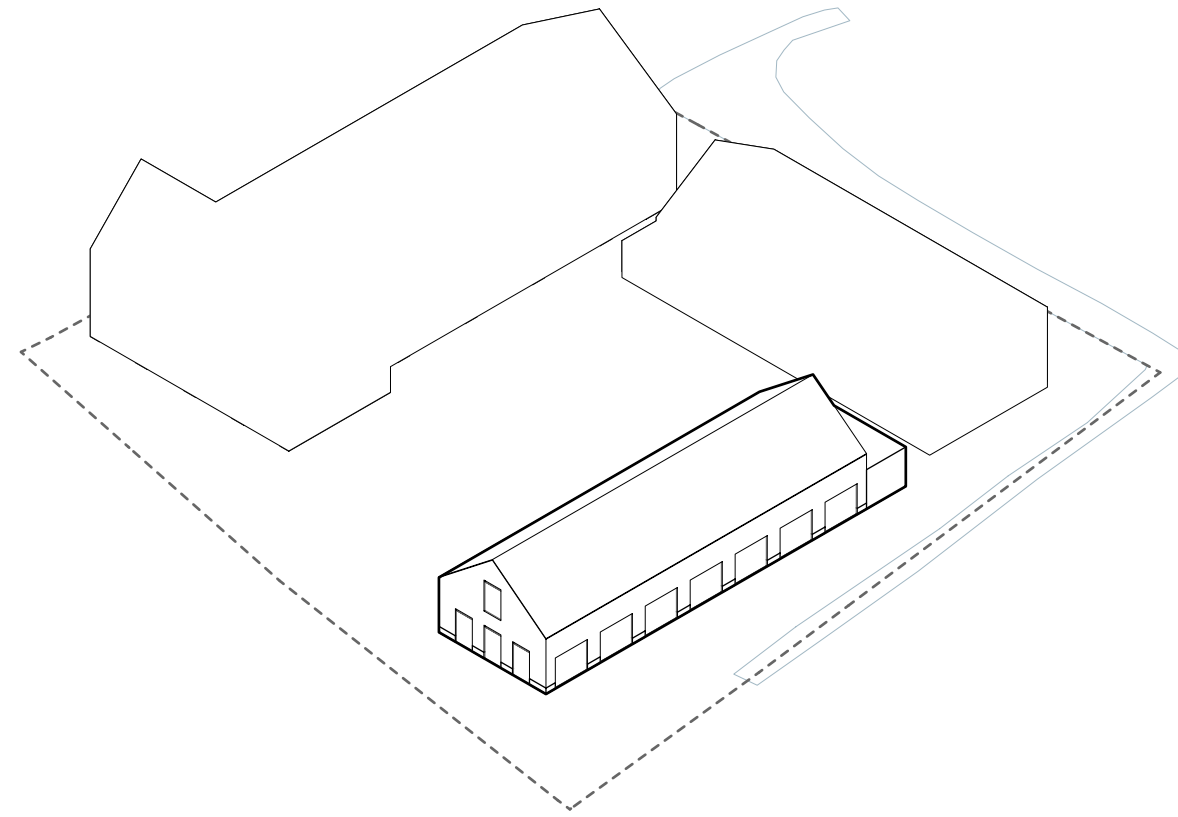


Doorsnede D-D
Schaal: 1:100





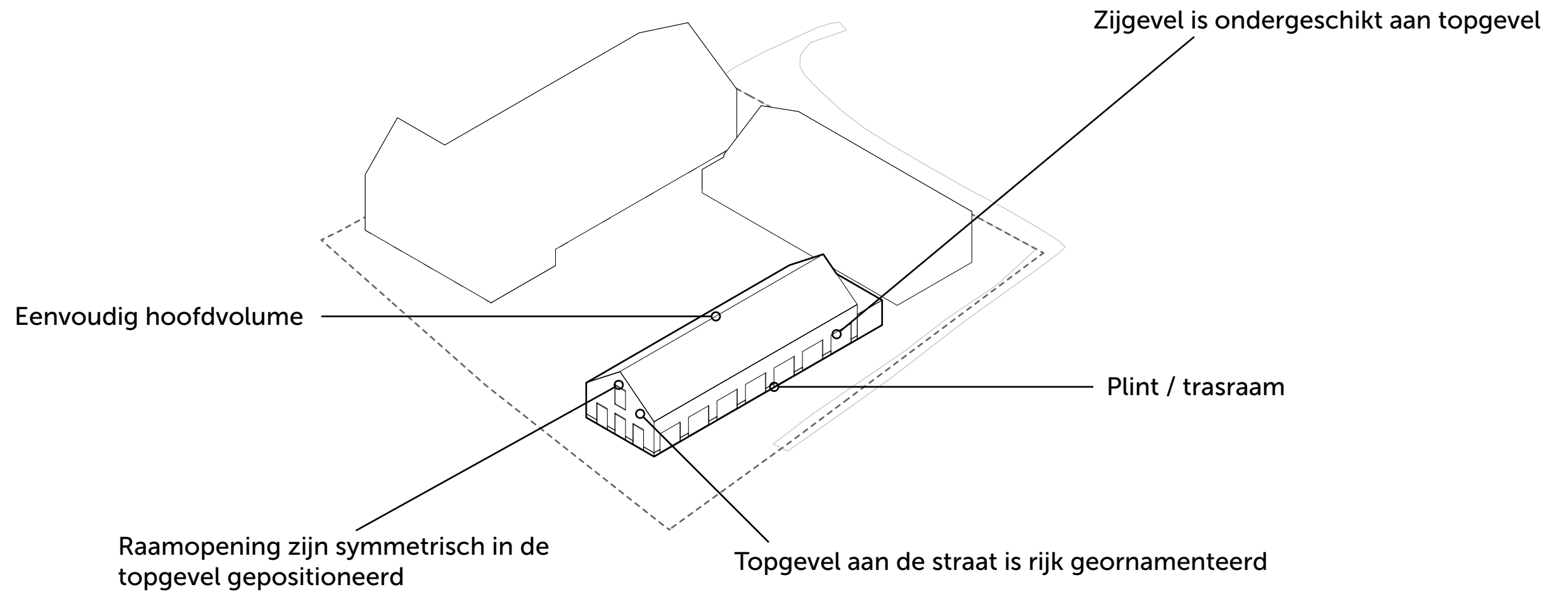
Referenties wonen op 4,20 m beuk



Zomerhuis



Referenties Zomerhuis



Symmetrische gevelopbouw

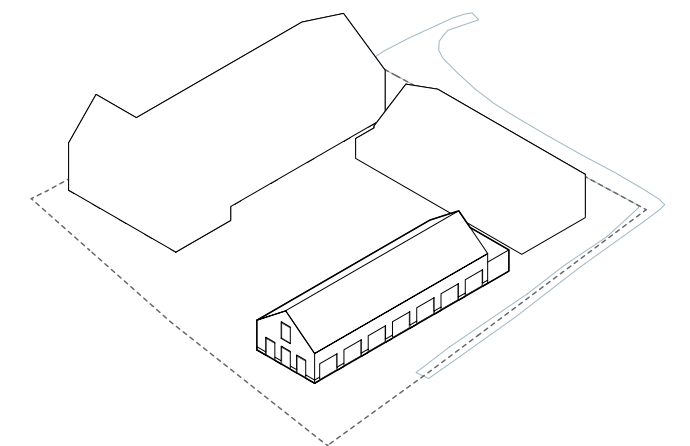


Rijk geornamenteerde topgevel





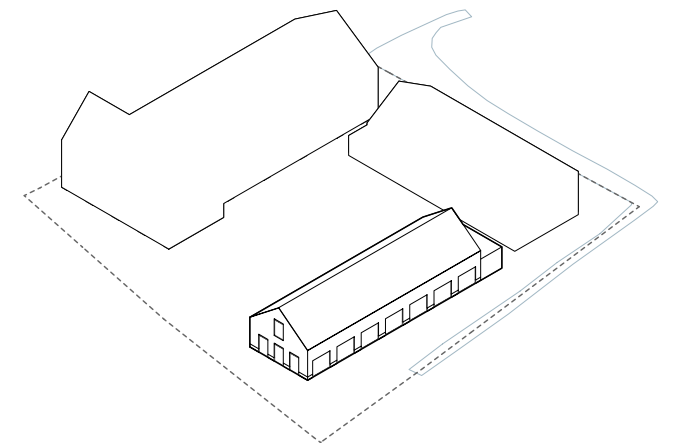
Zomerhuis: representatieve gevel en zijgevel



Zomerhuis - gevels



Zuidgevel



Zomerhuis - gevels

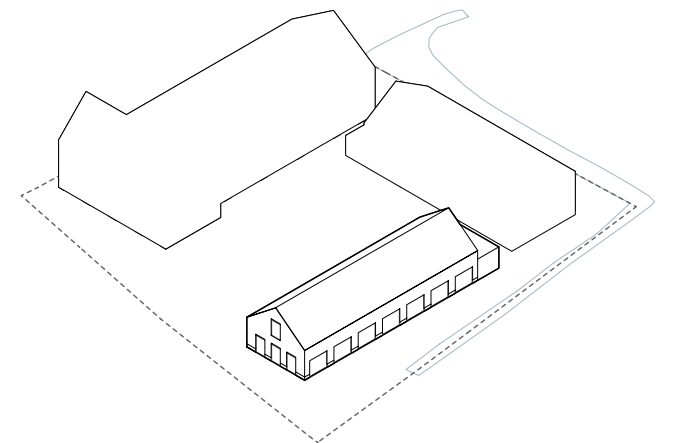


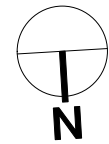
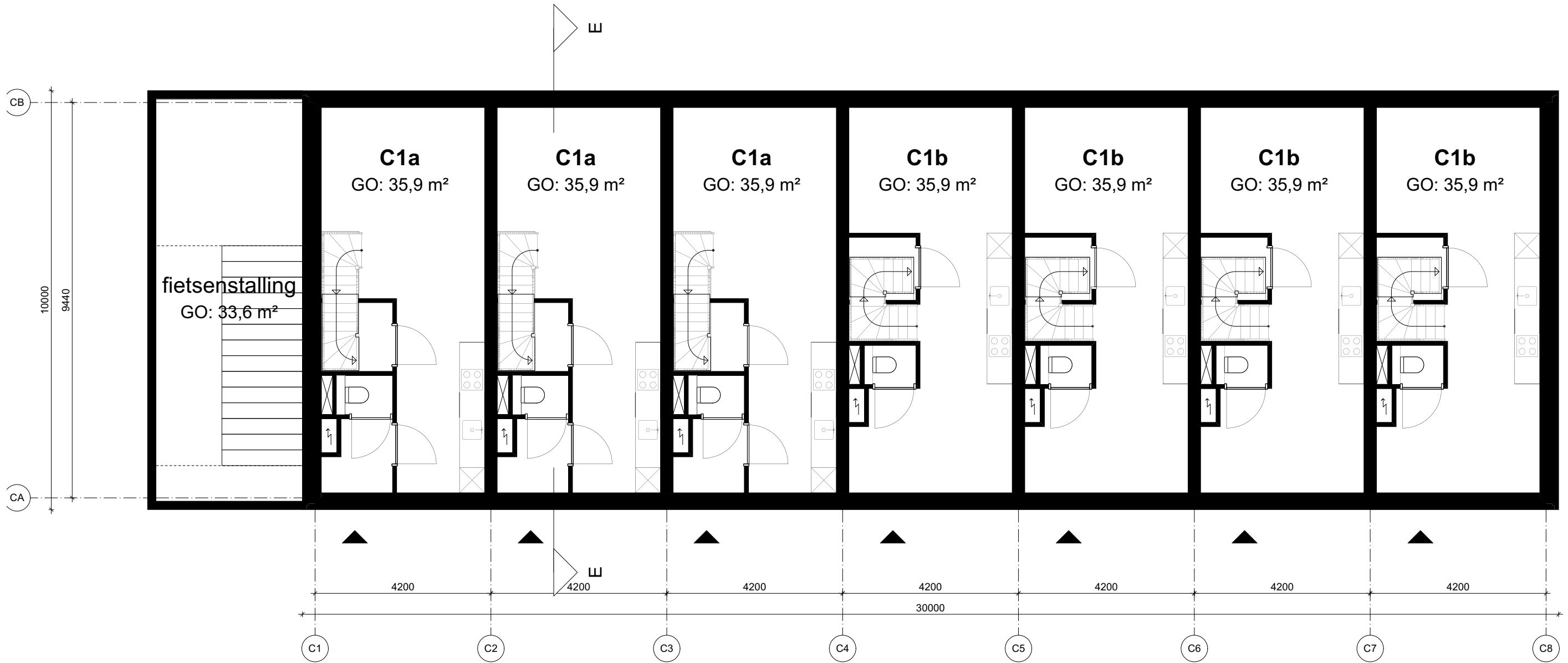


Westgevel
Schaal: 1:200

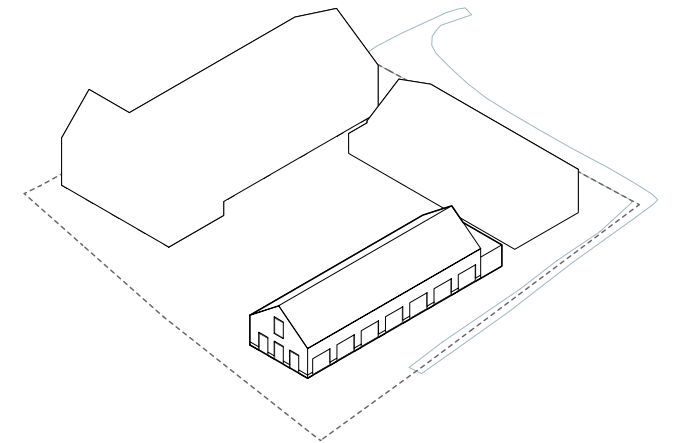


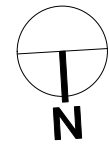
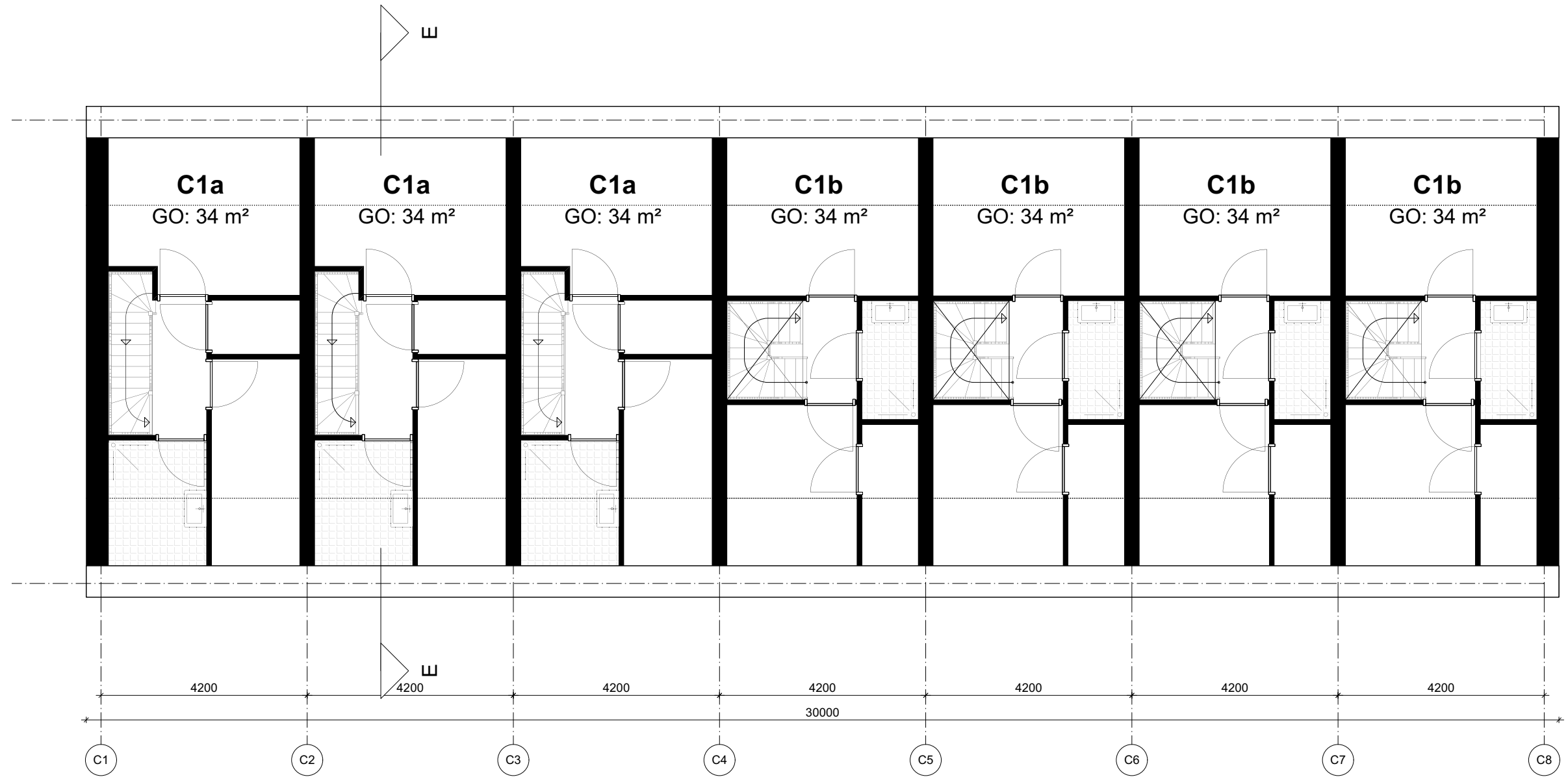
Zuidgevel
Schaal: 1:200



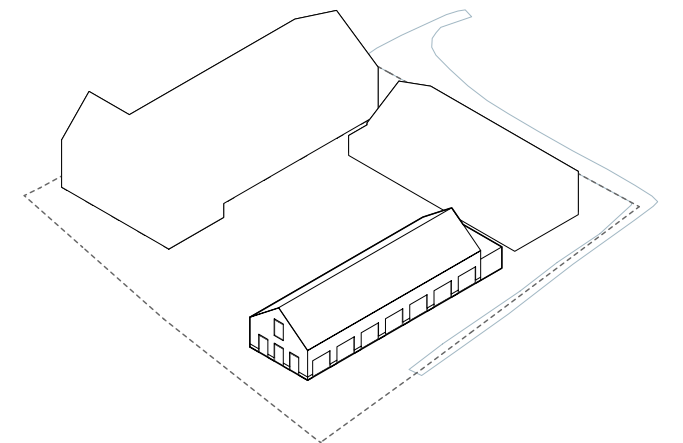


Blok C - Begane grond





Blok C - Eerste verdieping

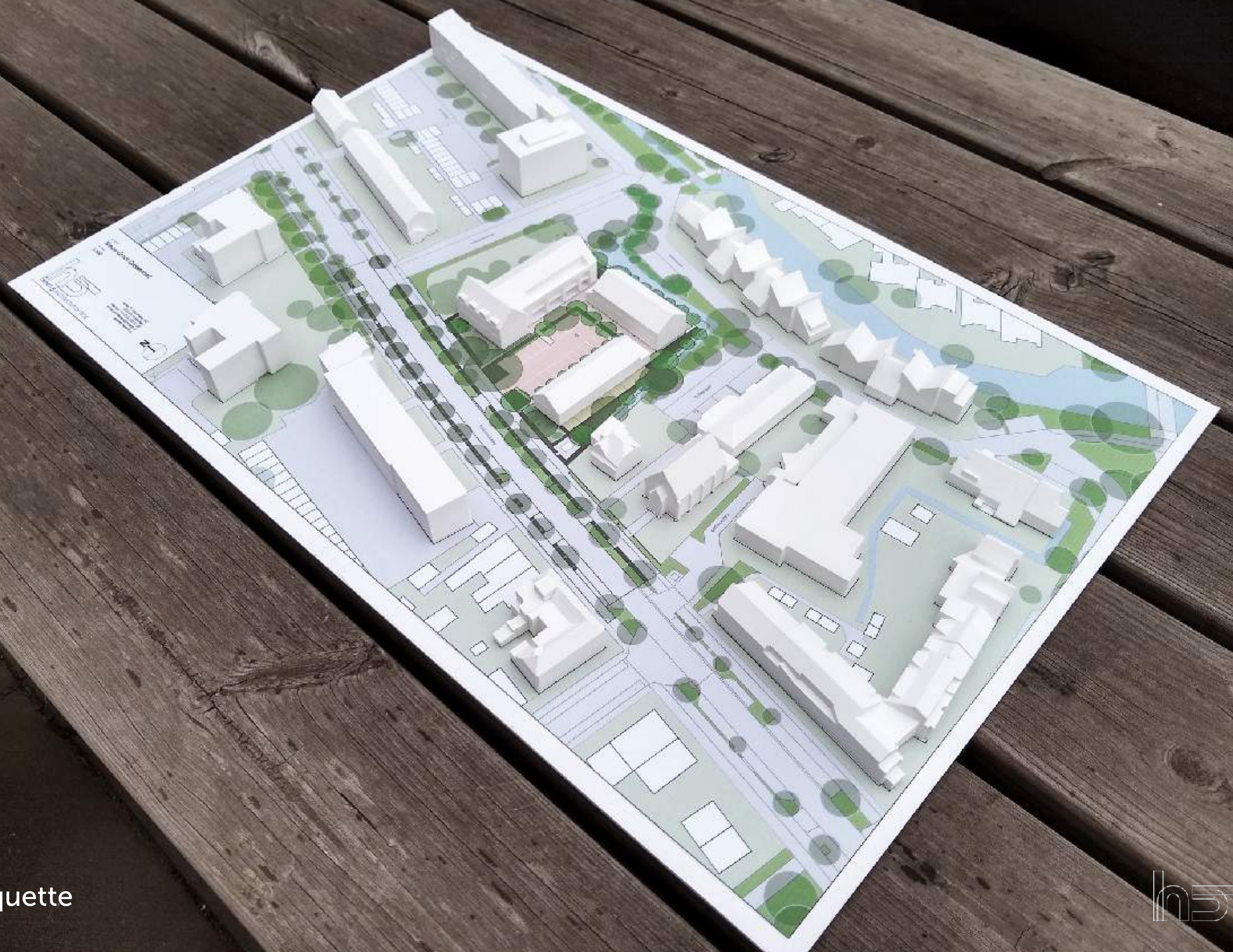




Zomerhuis - doorsnede



Gevelaanzicht Rijksstraatweg



Maquette