

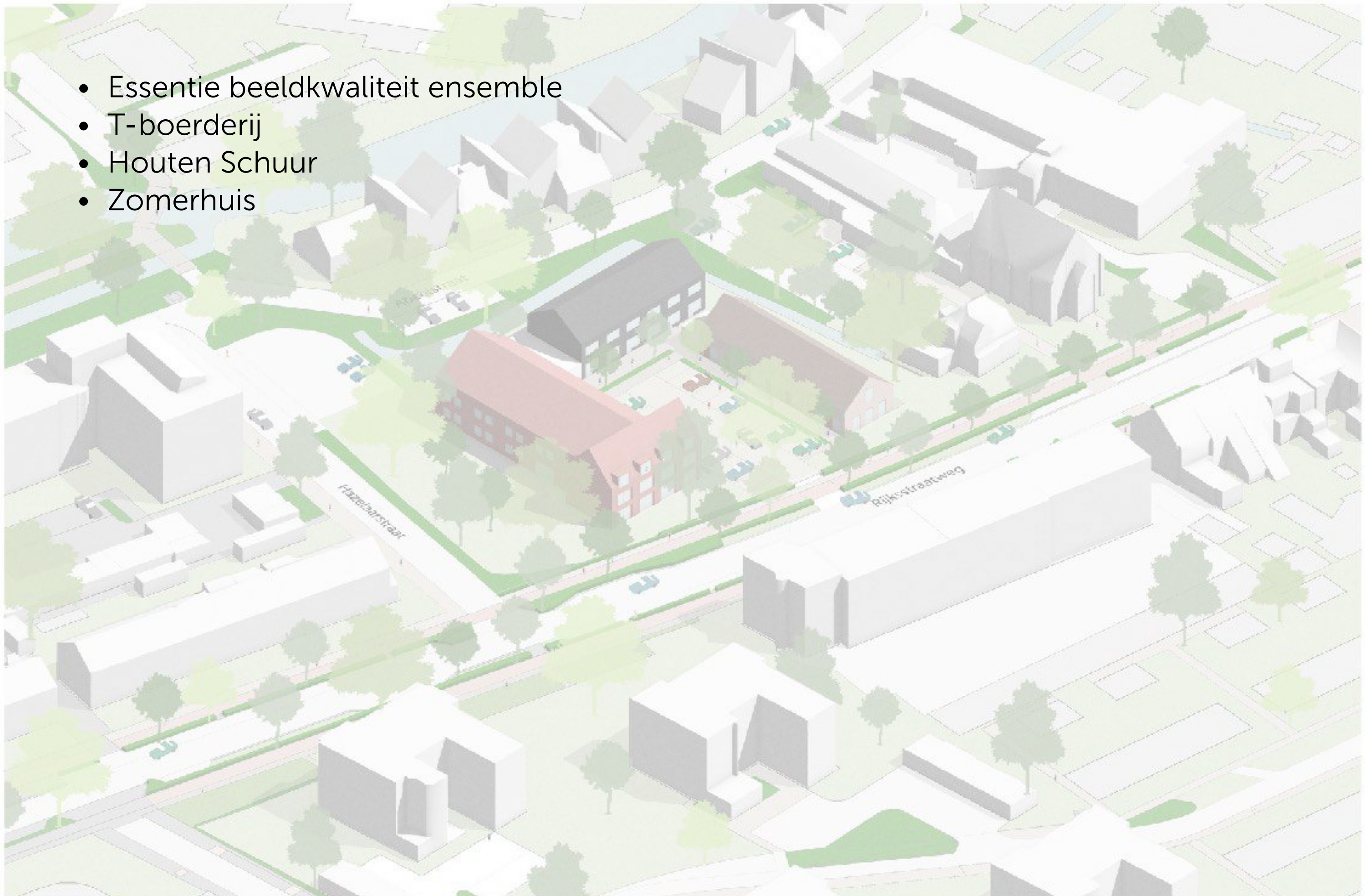


# Nieuw Groot Giessenhof

Kijkje in de keuken van de architect

10 mei 2022

- Essentie beeldkwaliteit ensemble
- T-boerderij
- Houten Schuur
- Zomerhuis





Vogelvlucht



1913  
Familie van Veeren  
Huis Groot Giessenhoff, Houtenstal op steenenvoet en schuur.

Boerderij, schuur en zomerhuis gegroepeerd rond het erf



Ensemble van gebouwen, ieder gebouw heeft eigen materialisatie

Heldere volumes, grote dakvlakken

Representatieve gevels gericht op de Rijksweg

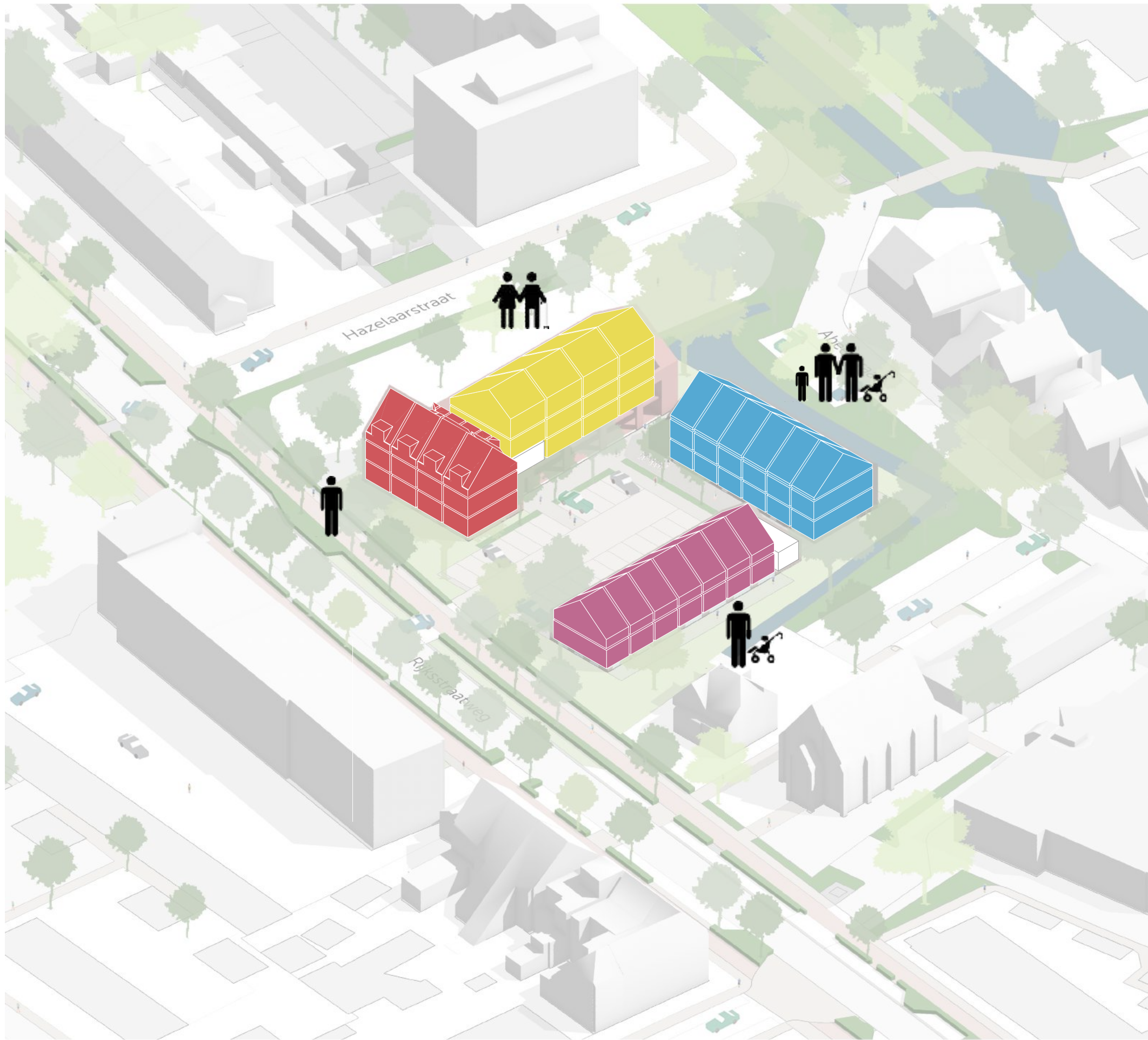
Boerderij, schuur en zomerhuis gegroepeerd rond het erf

Behouden en versterken van de "groene schil"

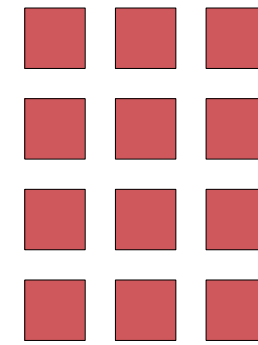
Stalen hekwerk op betonnen voet

Uitgangspunten gebouw ensemble



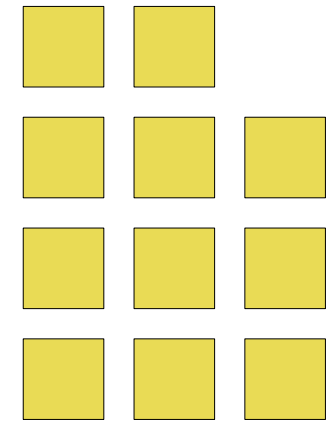


## 36 woningen



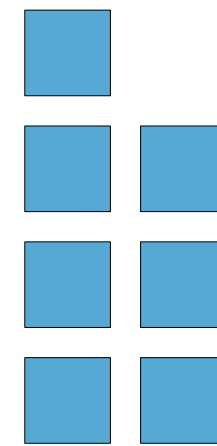
**12x**  
studio

ca. 36 m<sup>2</sup>



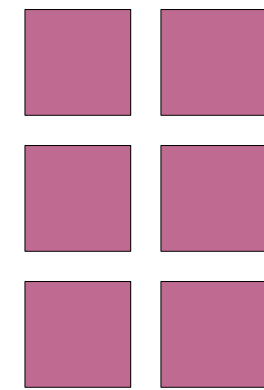
**11x**  
twee- en driekamerappartementen

ca. 62 m<sup>2</sup>



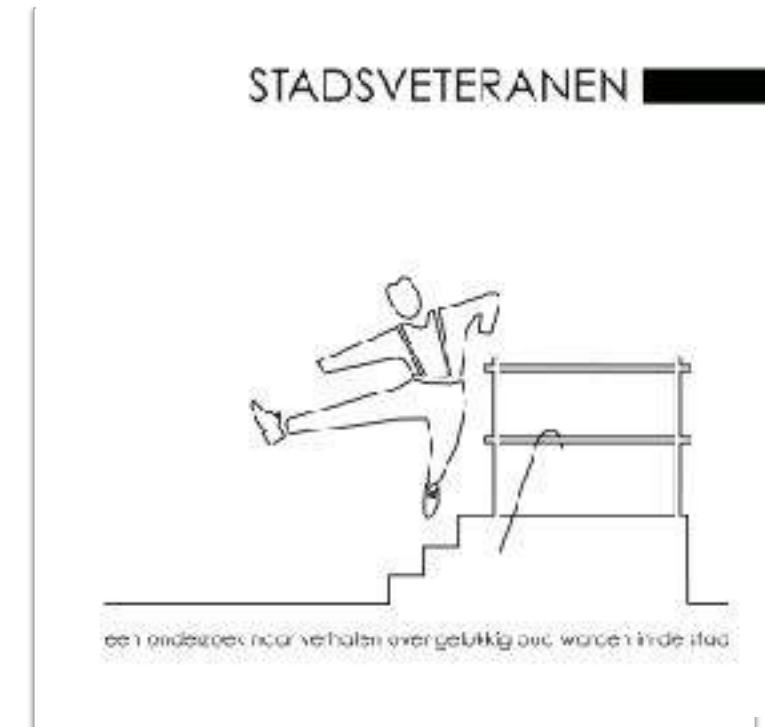
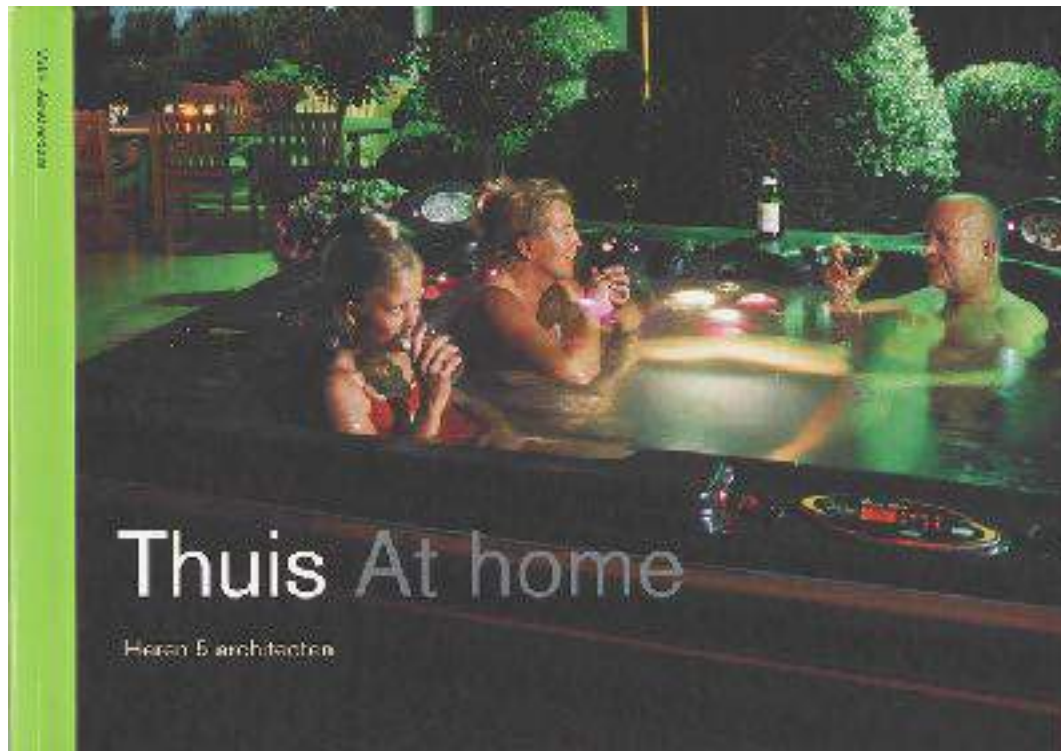
**7x**  
grondgebonden  
(klein)

70 m<sup>2</sup>



**6x**  
grondgebonden (groot)

110 m<sup>2</sup>

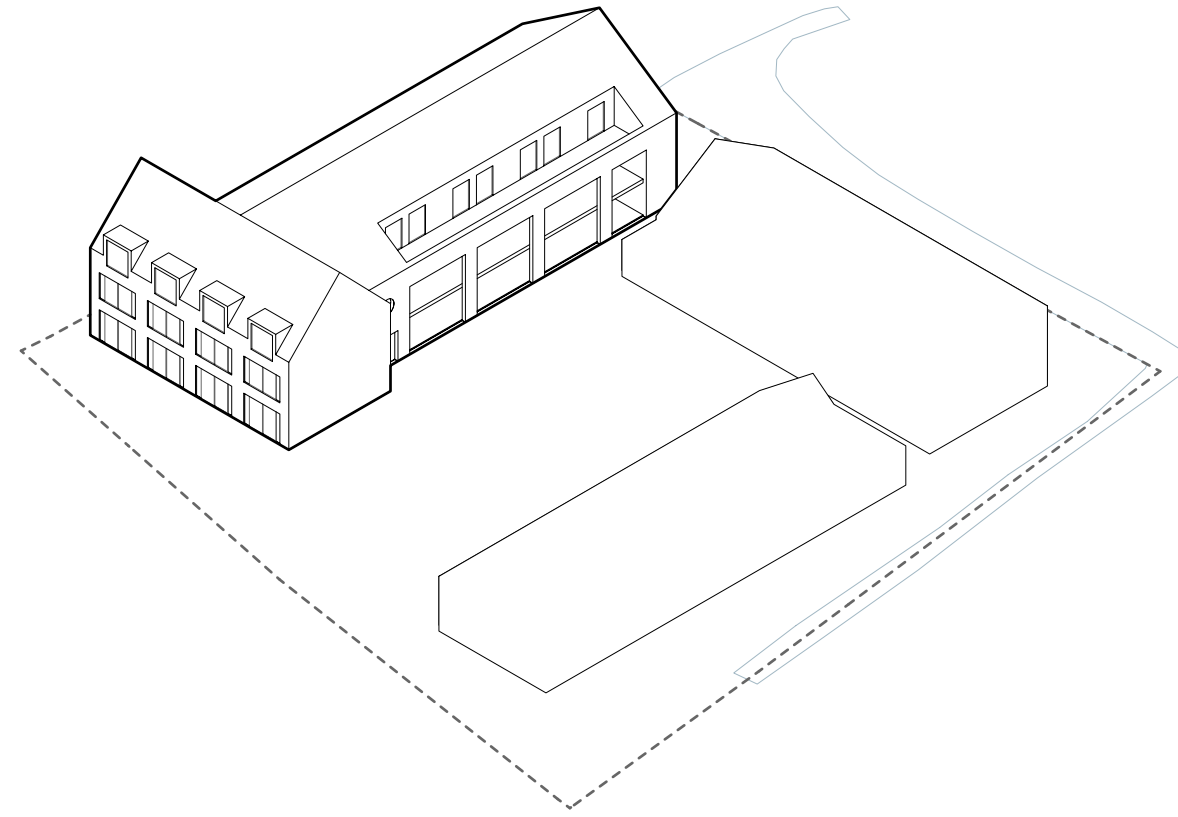


Voor wie gaan we bouwen?



Situatie Nieuw Groot Giessenhof



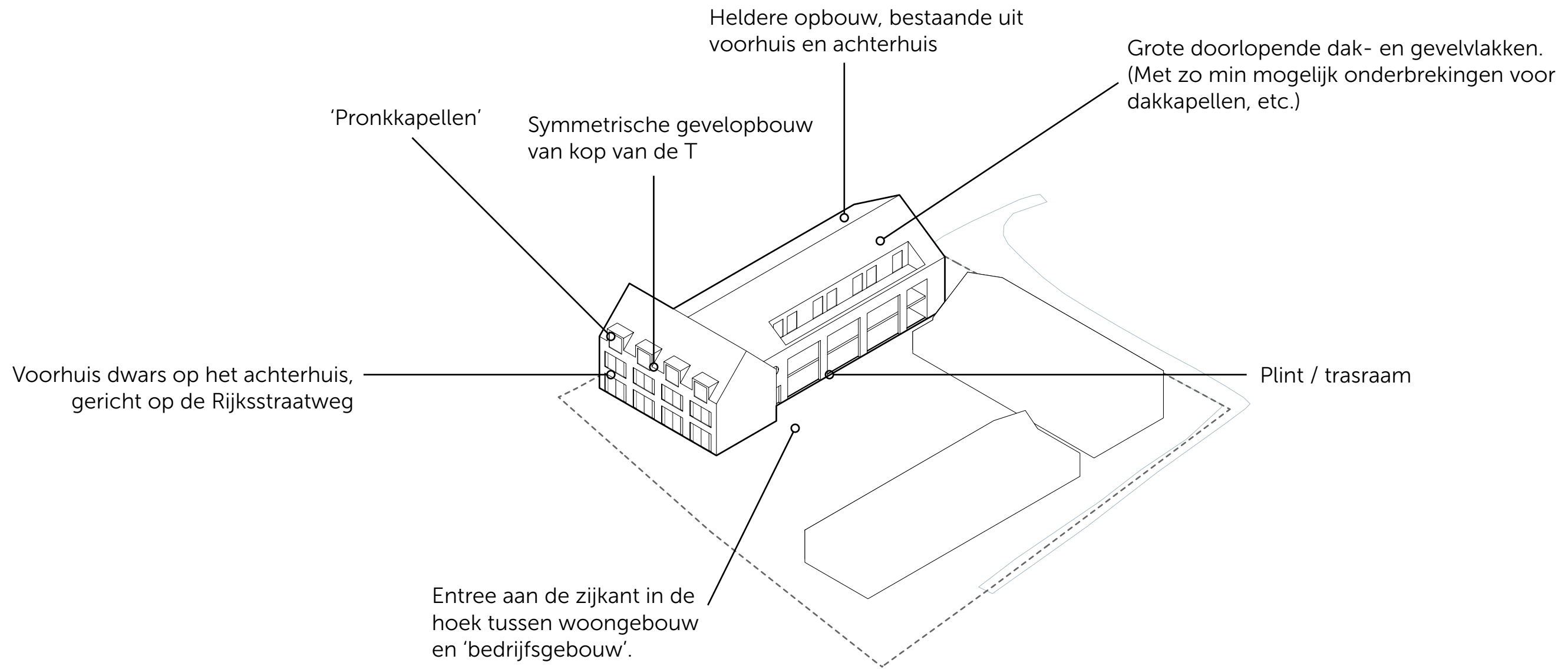


# T-boerderij



Referenties T-boerderij





Verbijzondering entree



Plint / trasraam



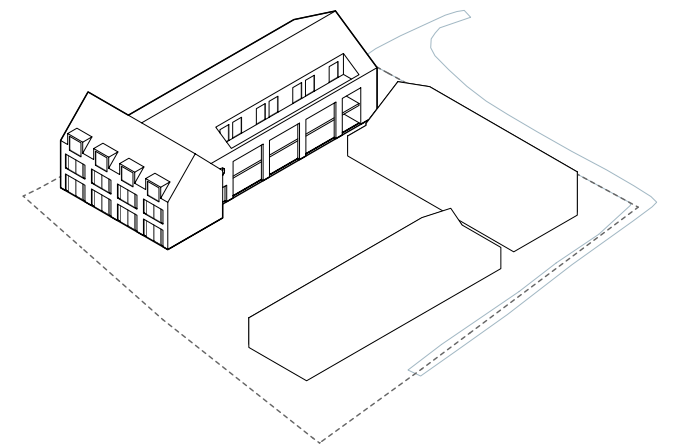
'Pronkkapellen'

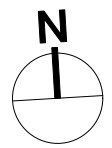
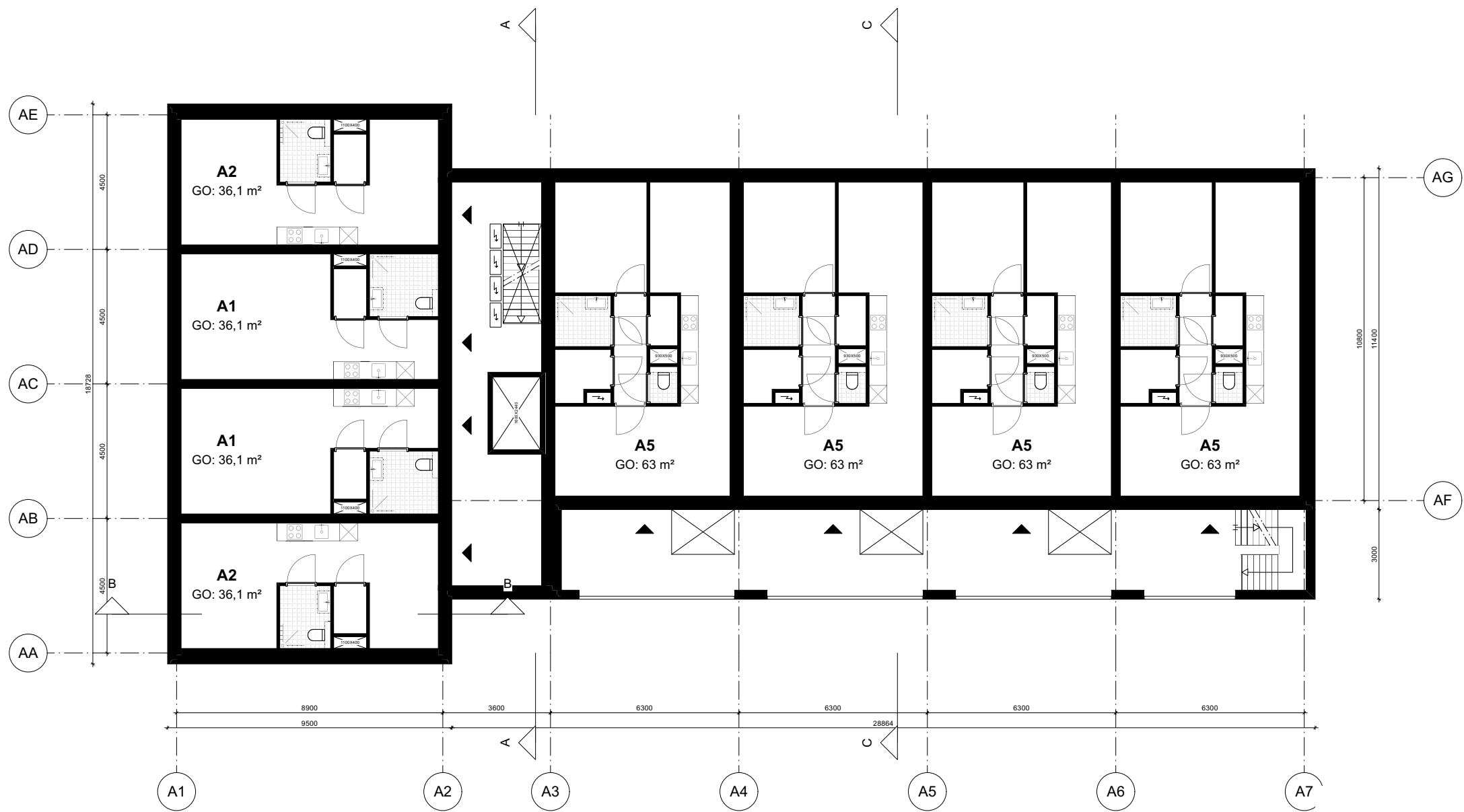


Metselwerk accenten

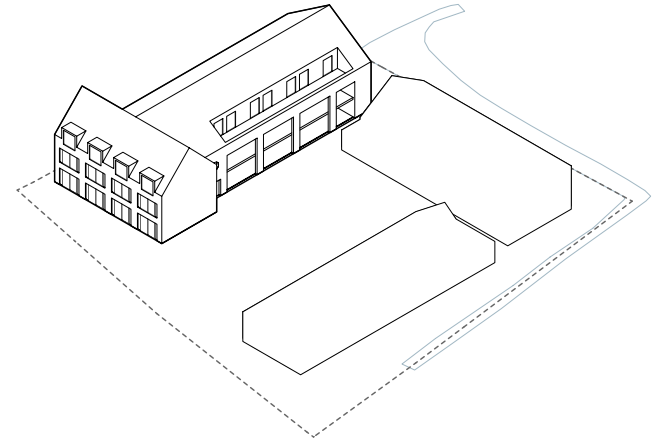


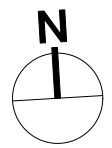
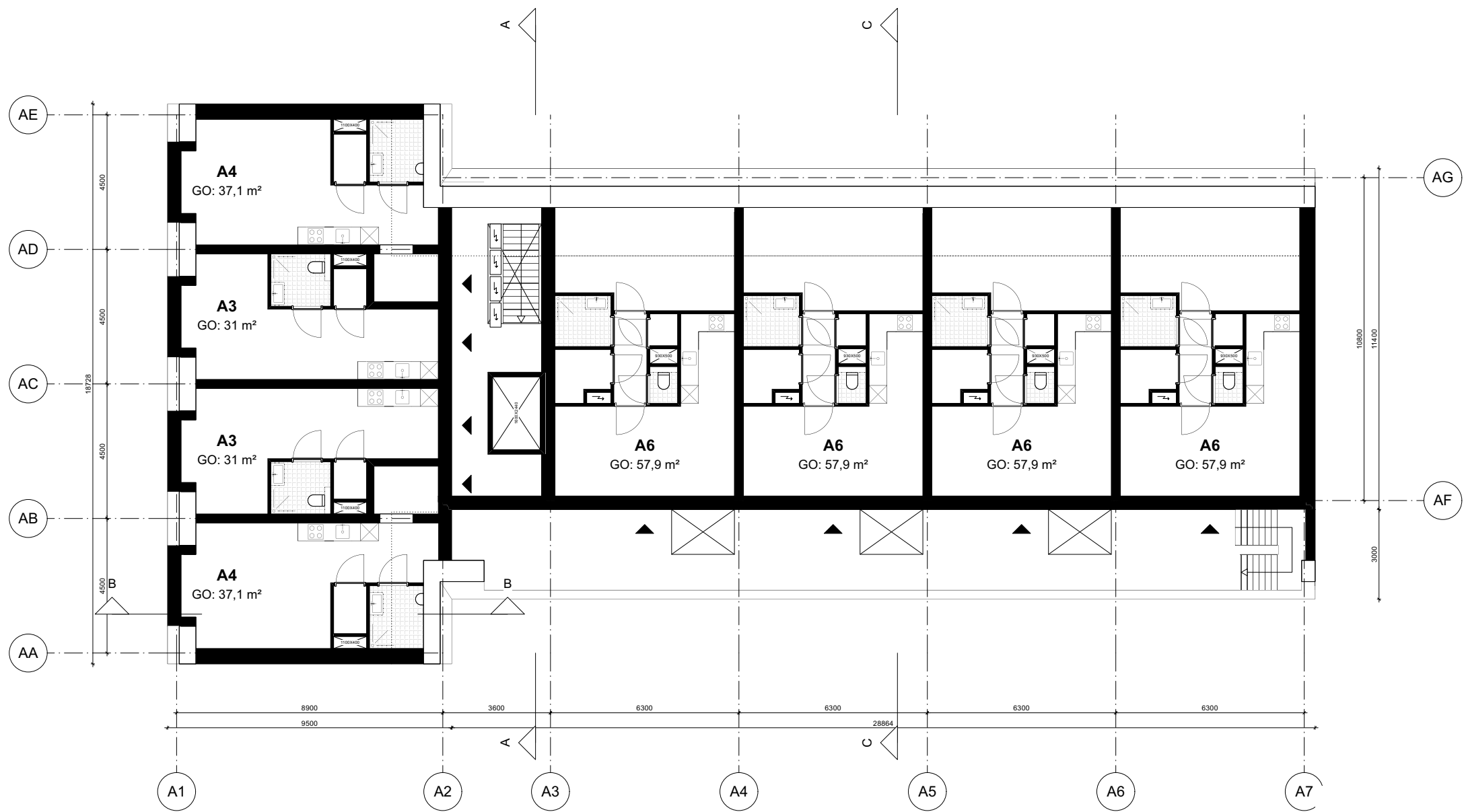
Blok A - Begane grond



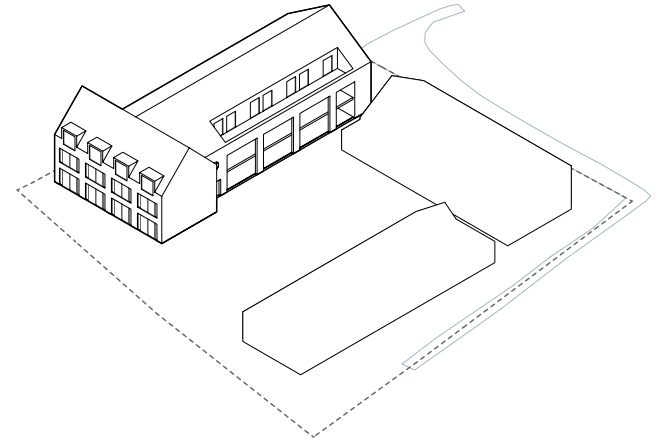


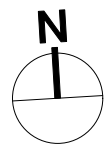
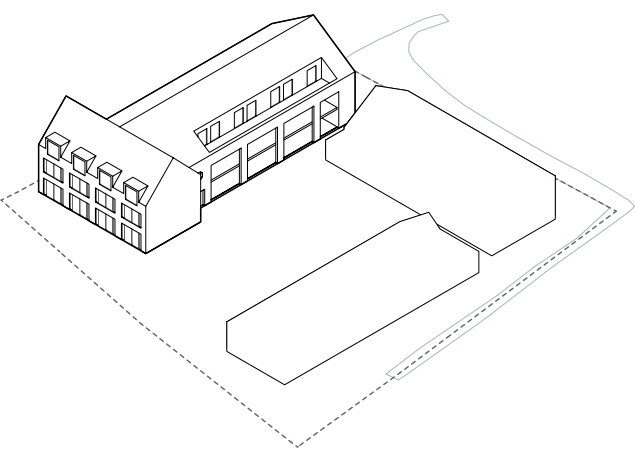
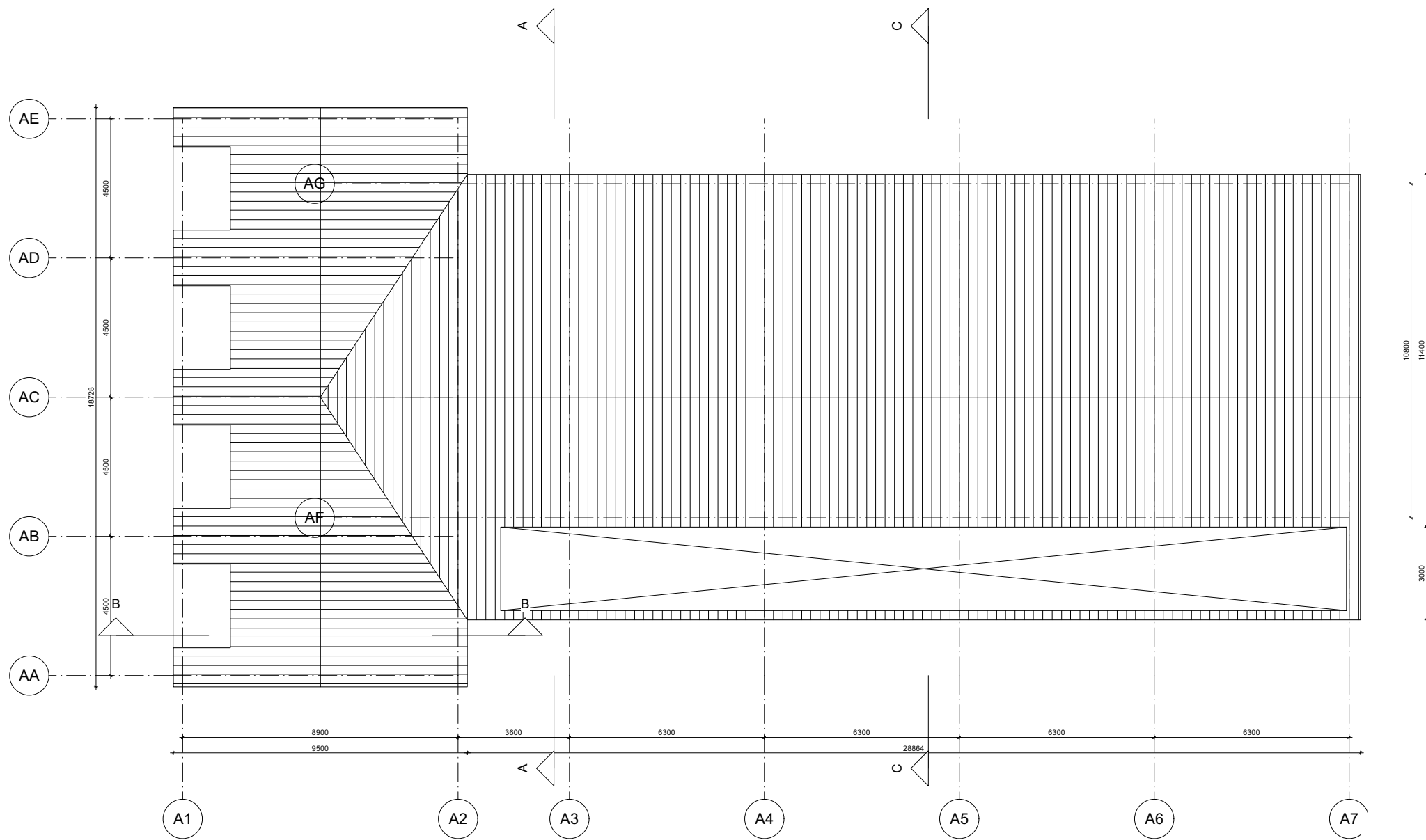
Blok A - Eerste verdieping





Blok A - Tweede verdieping

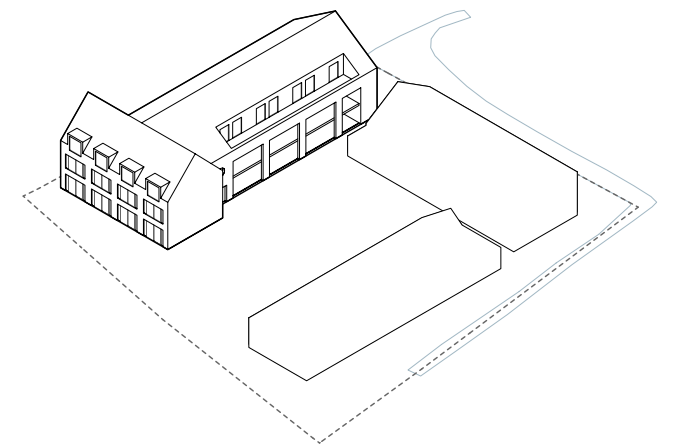
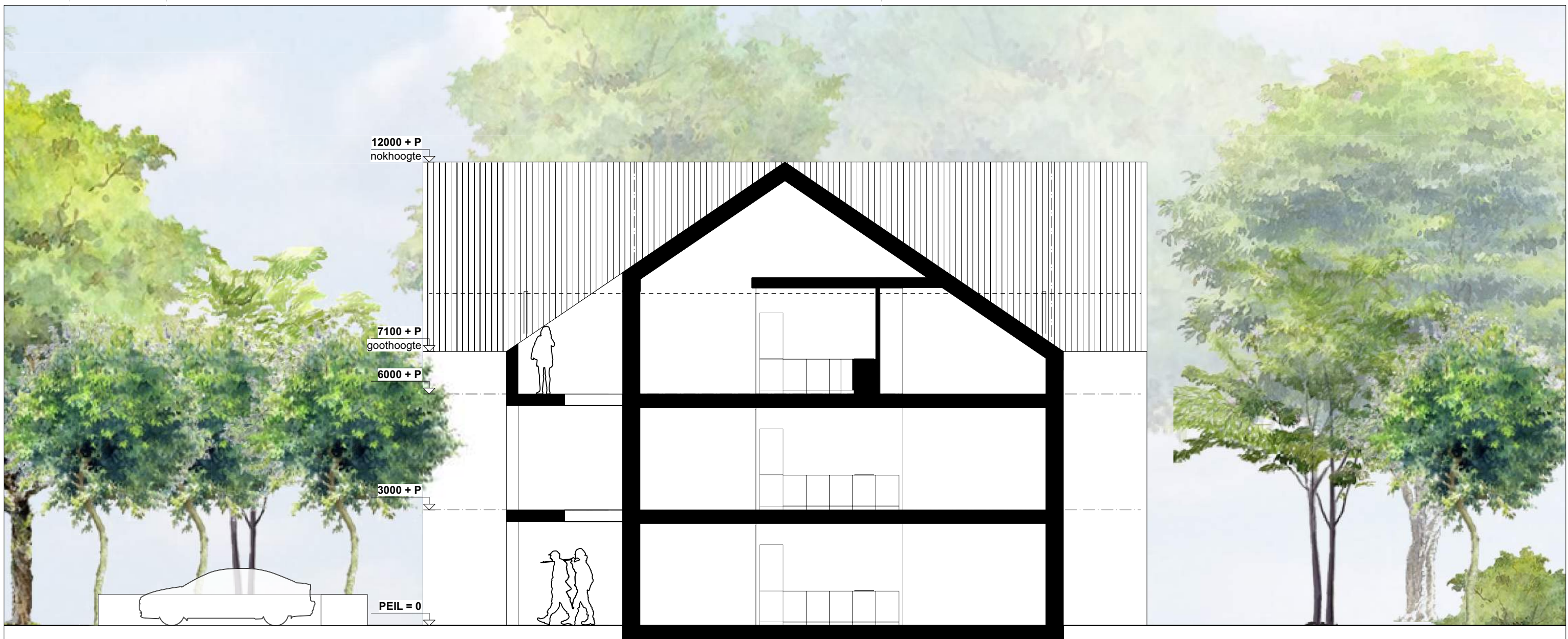




Blok A - Dakaanzicht

T-boerderij - plattegrond



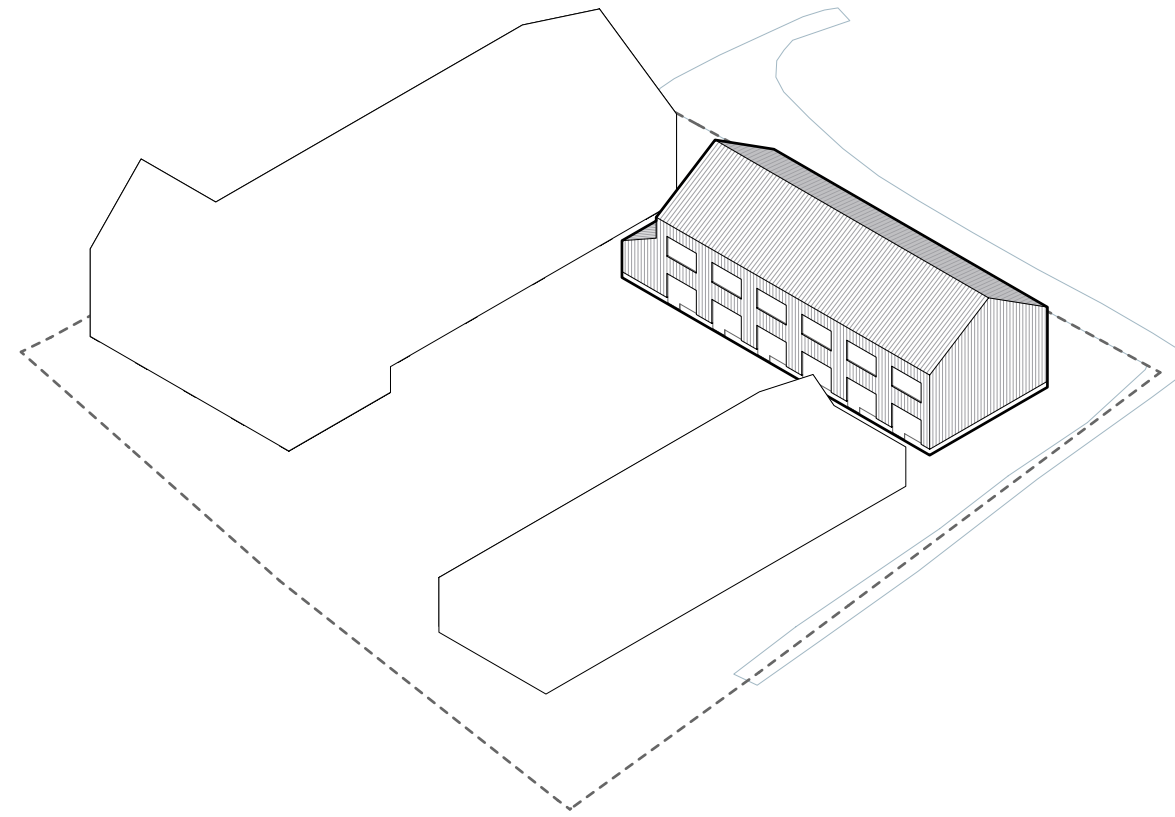


T-boerderij - doorsnede





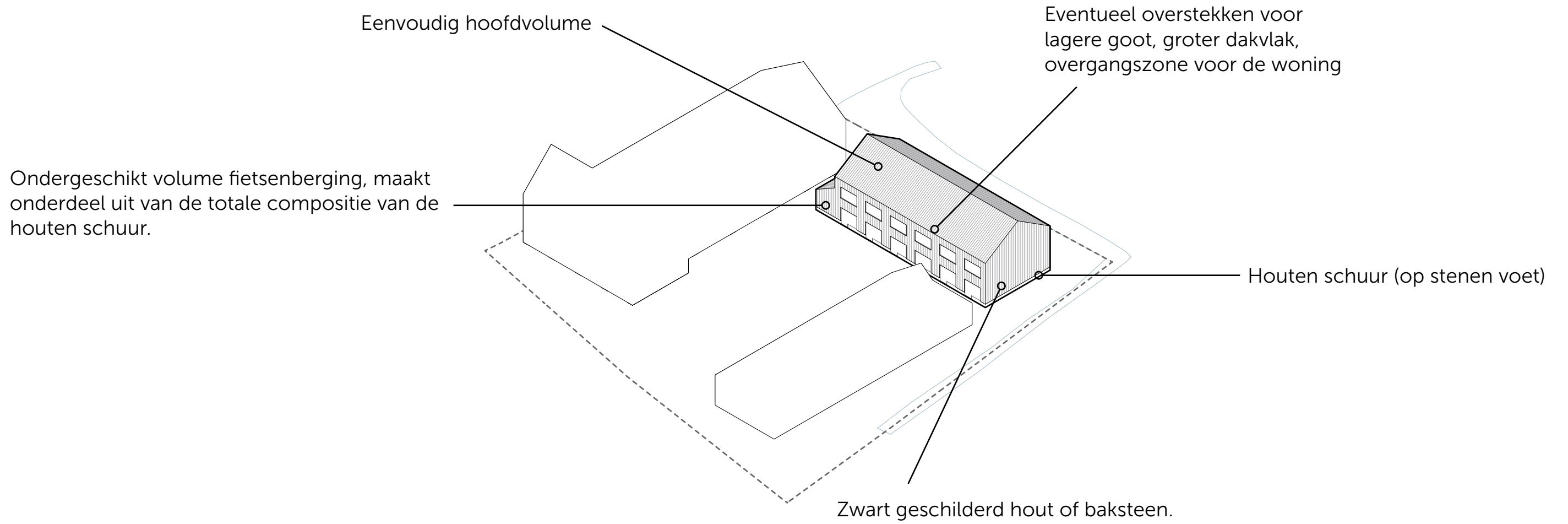
Hof van Hoytema: leefgalerij



# Houten schuur



Referenties houten schuur



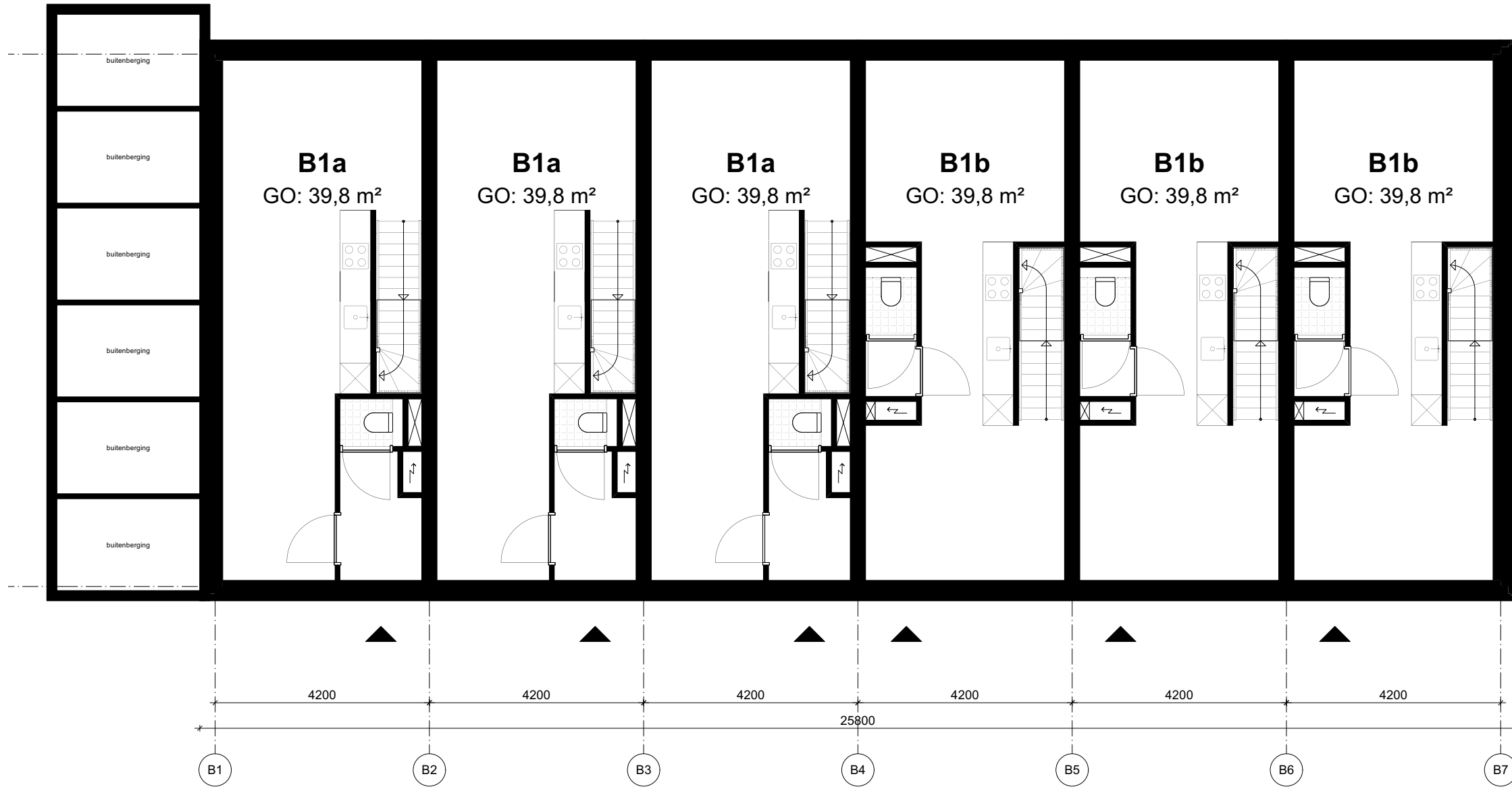
Houten schuur (op stenen voet)



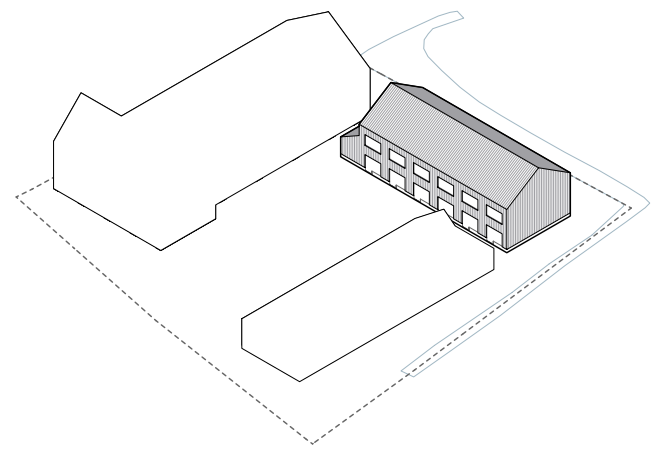
Fietsenberging is onderdeel hoofdvolume



# Houten schuur

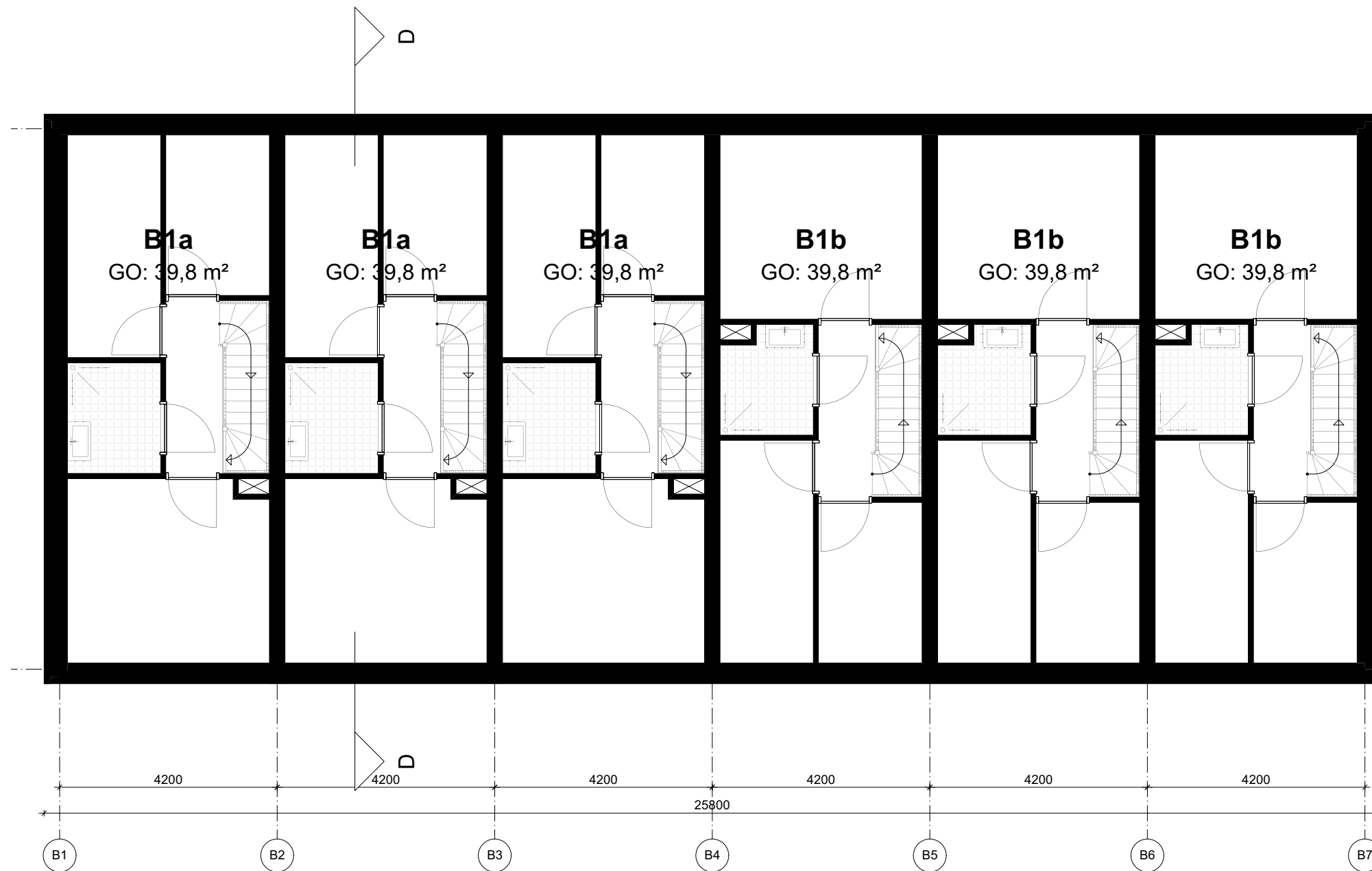


Blok B - Begane grond

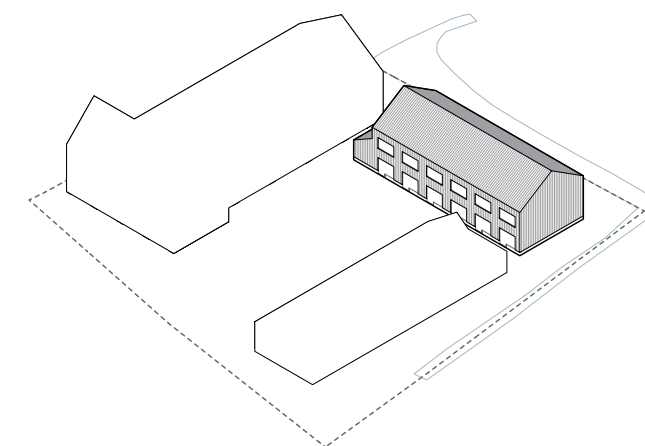


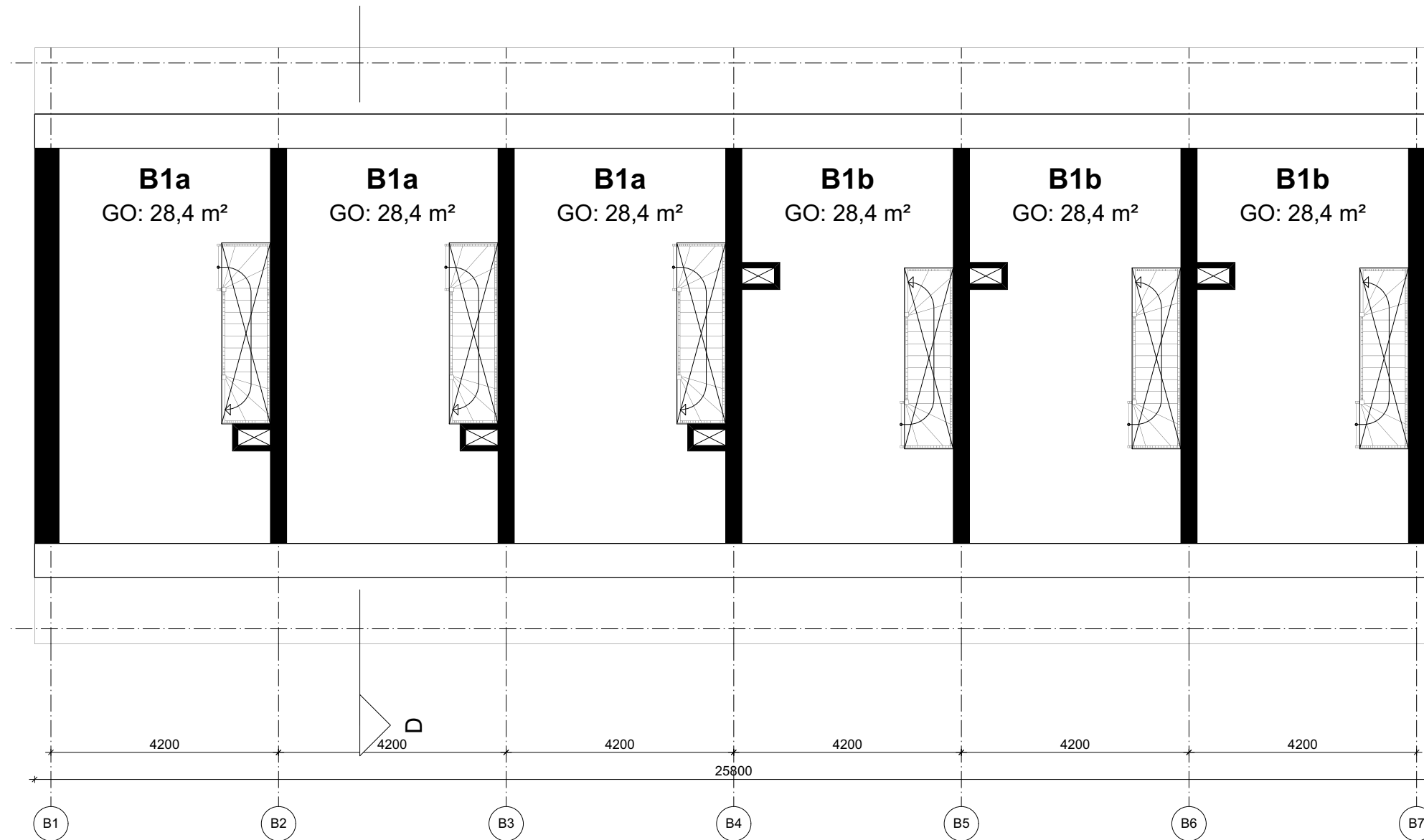
Houten schuur - plattegrond



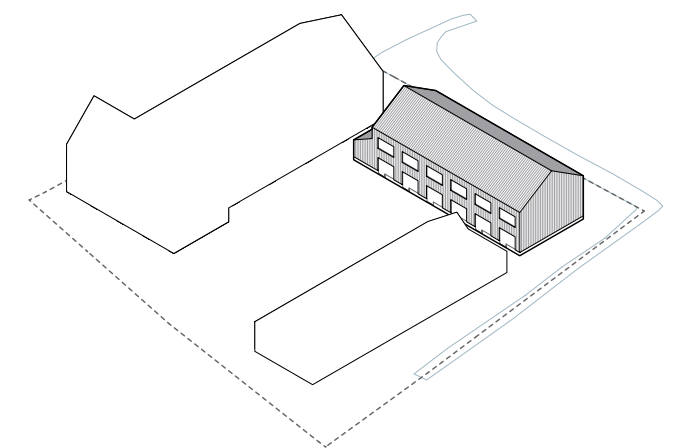


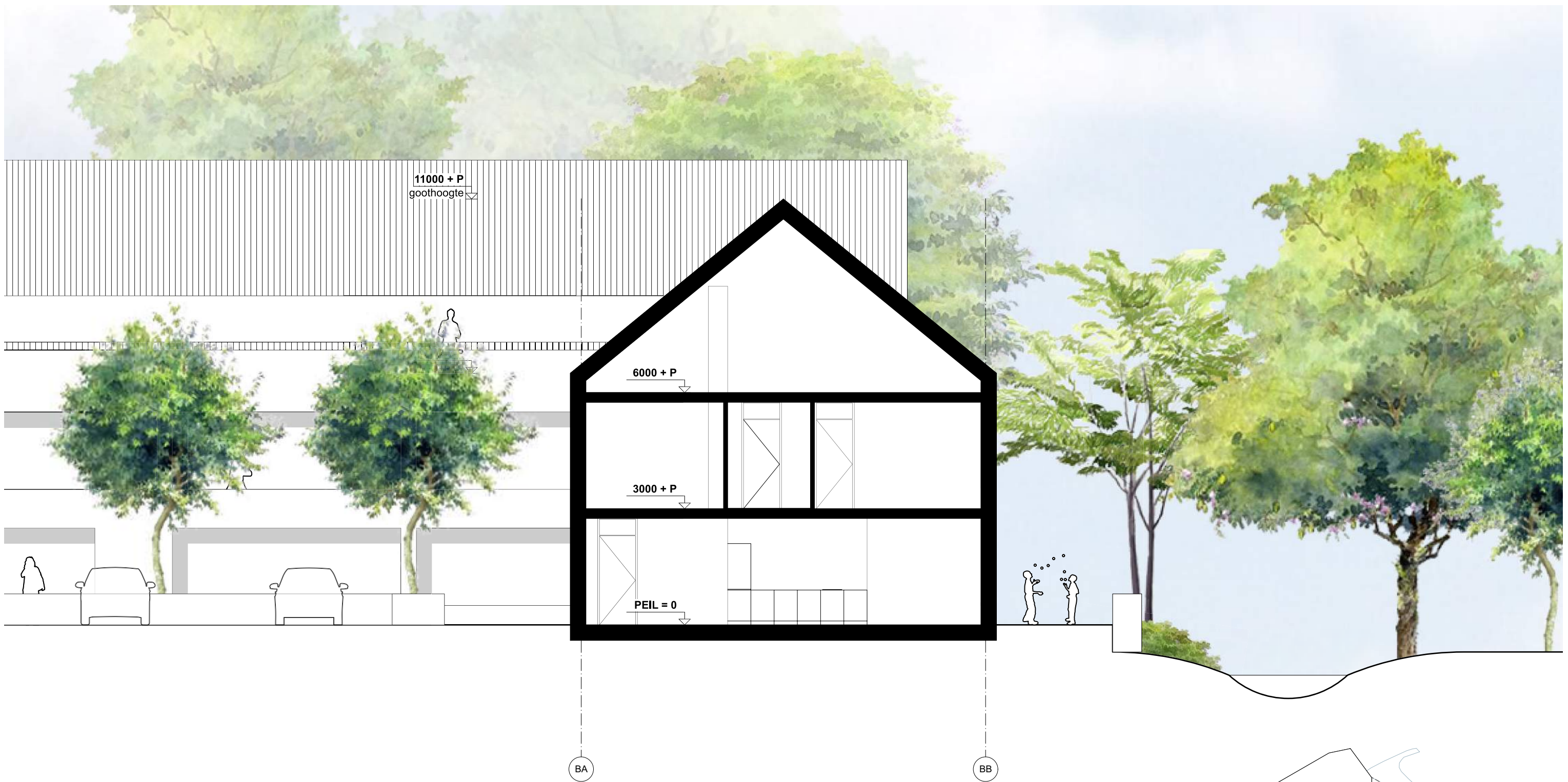
Blok B - Eerste verdieping



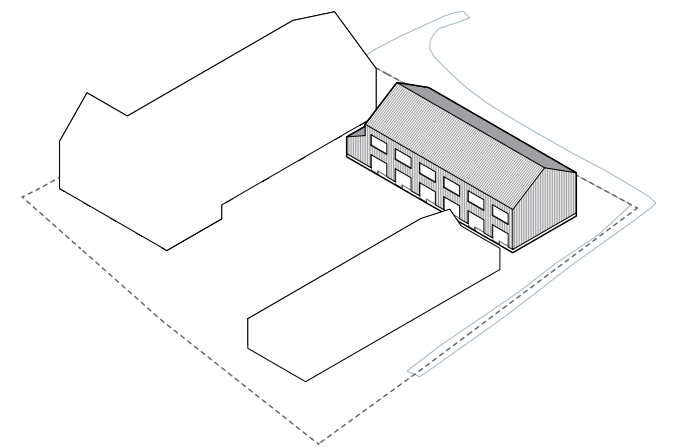


Blok B - Tweede verdieping



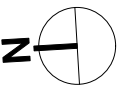
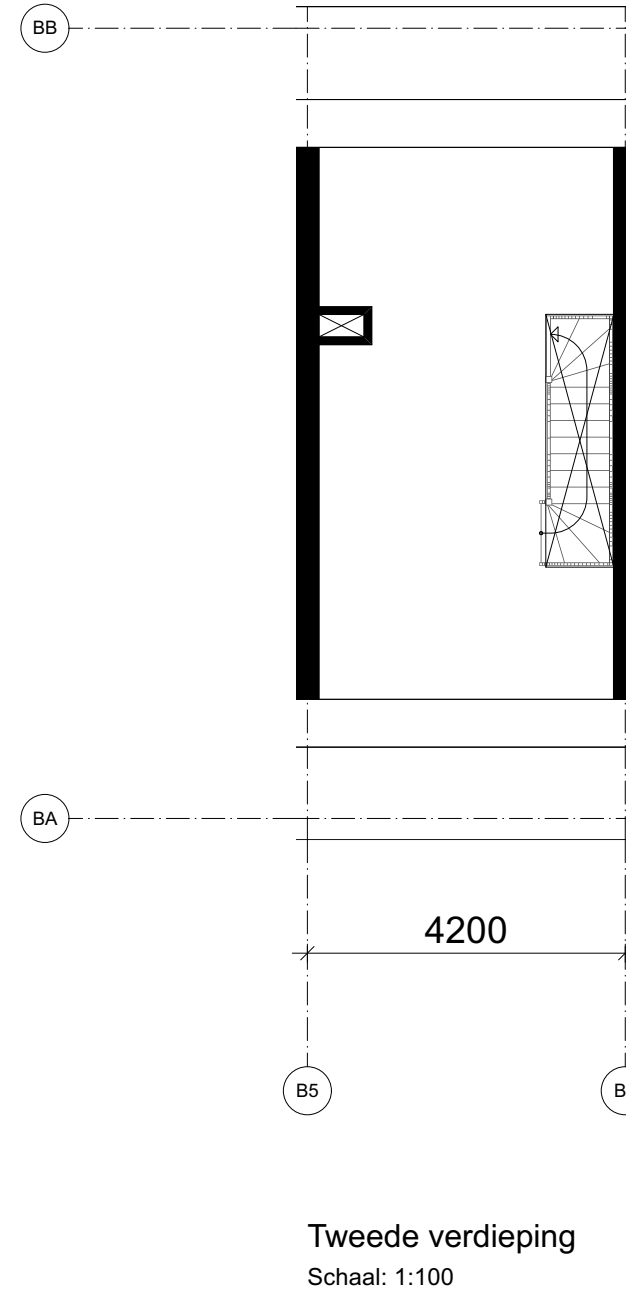
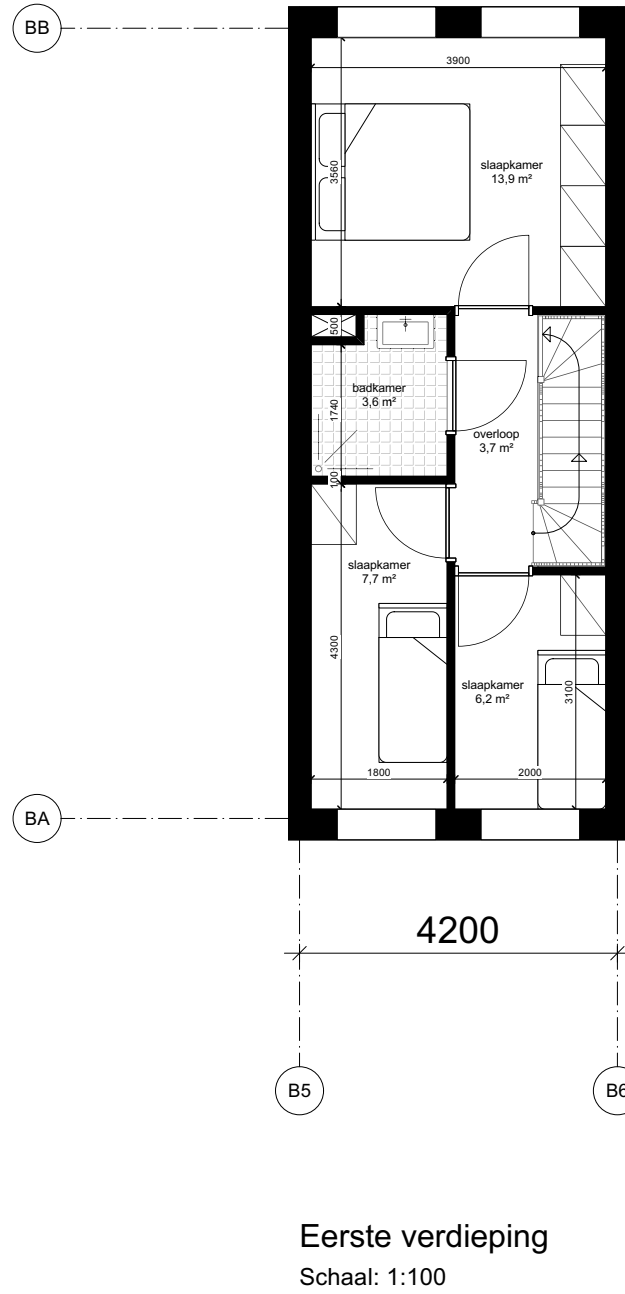
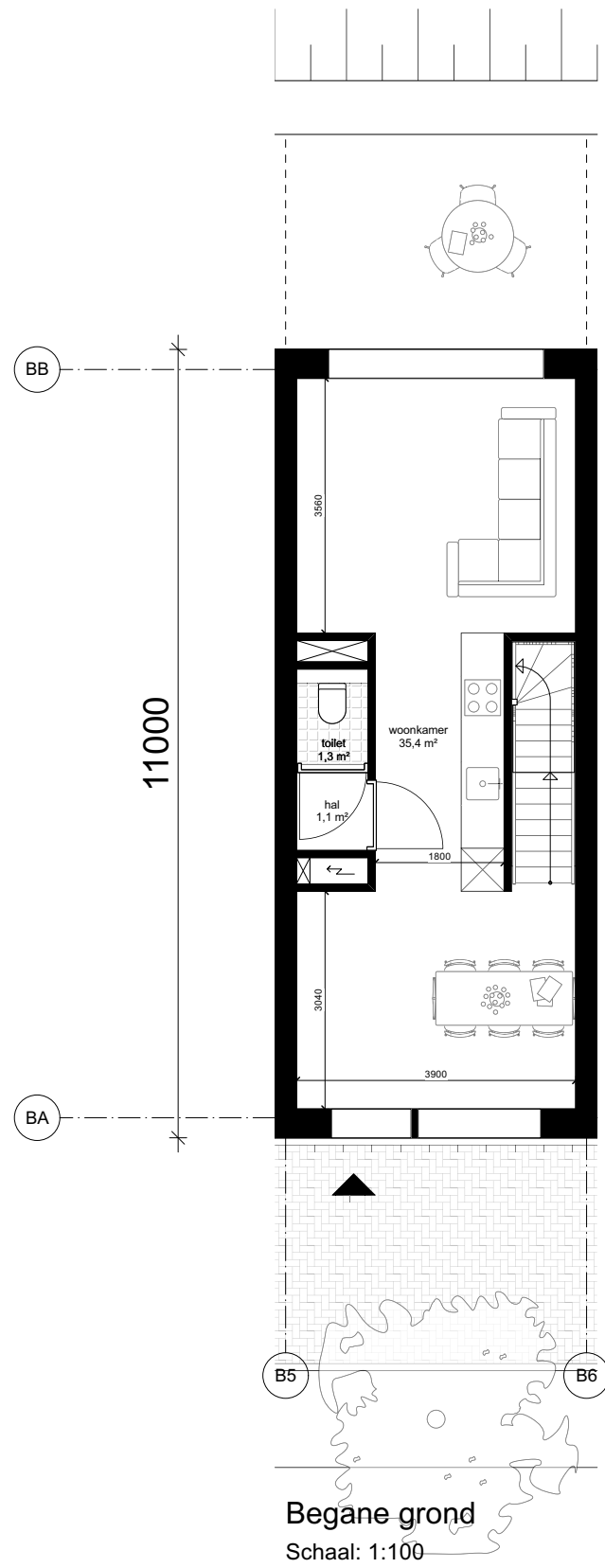
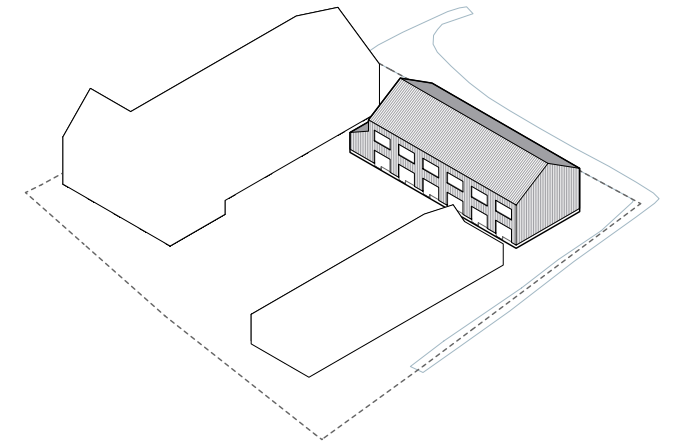


Doorsnede D-D  
 Schaal: 1:100





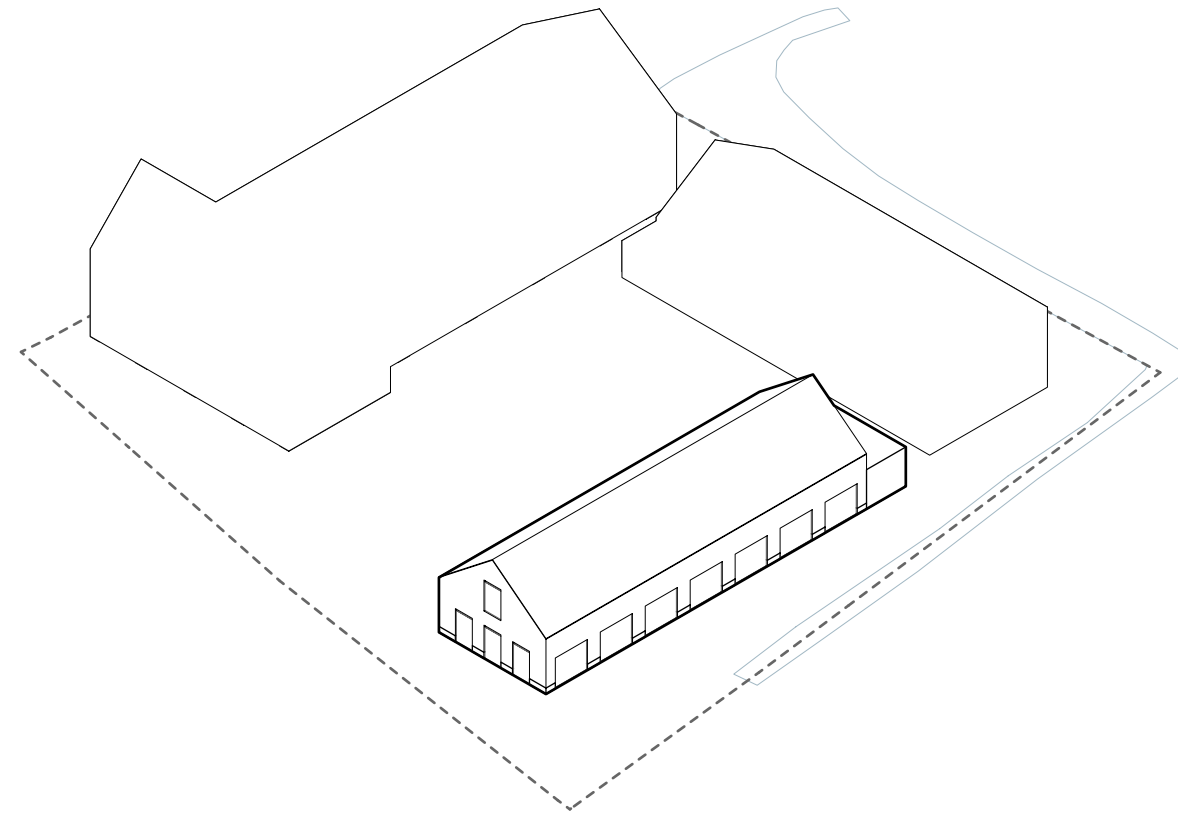
# Blok B - alternatief b





Referenties wonen op 4,20 m beuk

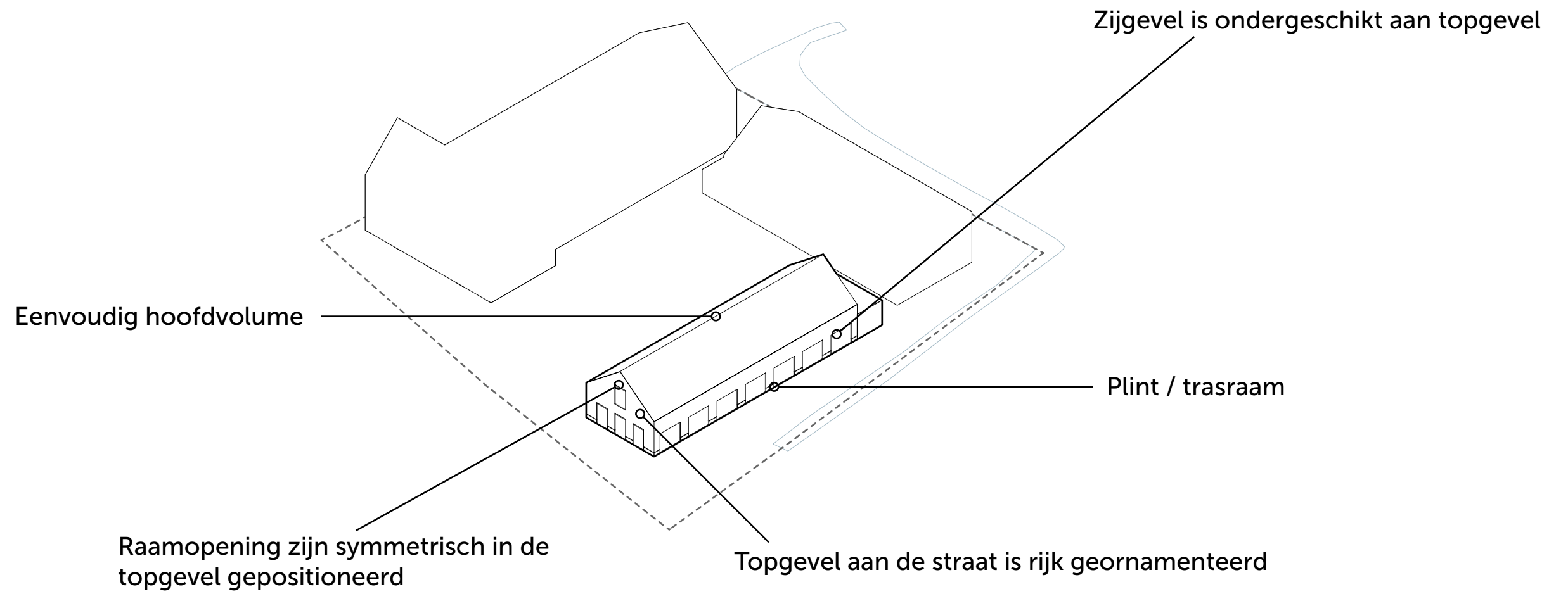




# Zomerhuis



Referenties Zomerhuis

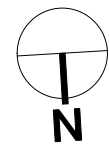
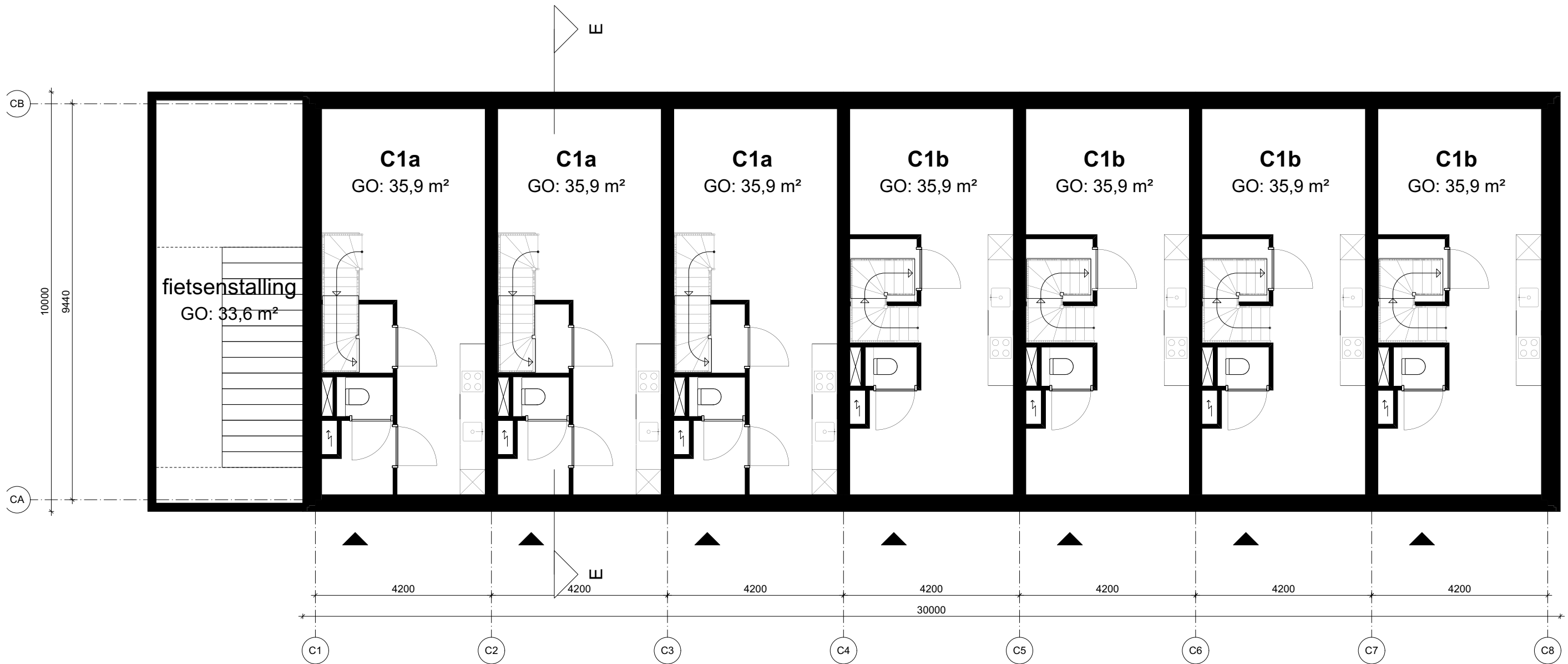


Symmetrische gevelopbouw

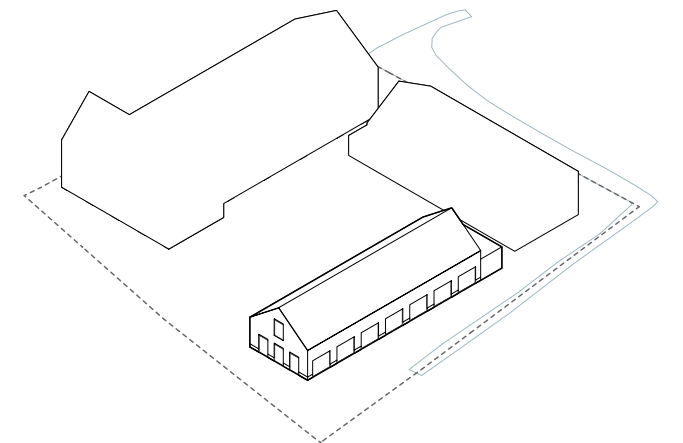


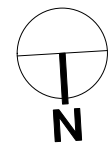
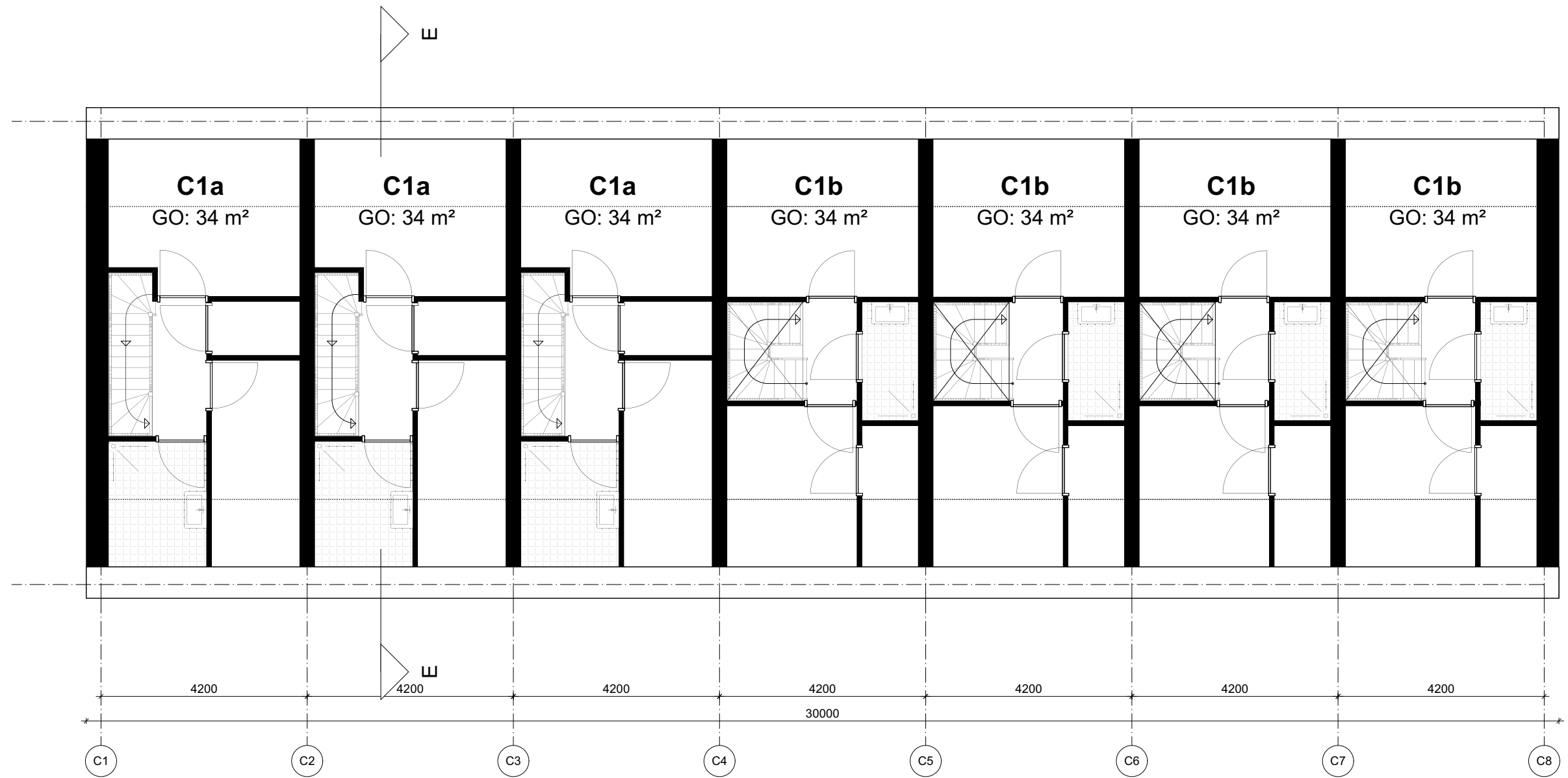
Rijk geornamenteerde topgevel



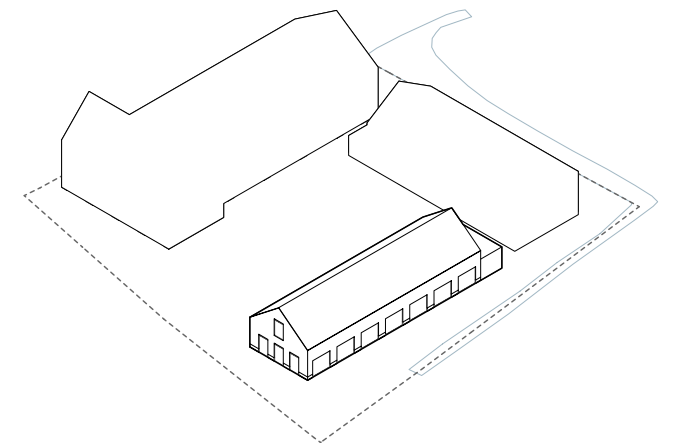


Blok C - Begane grond





Blok C - Eerste verdieping



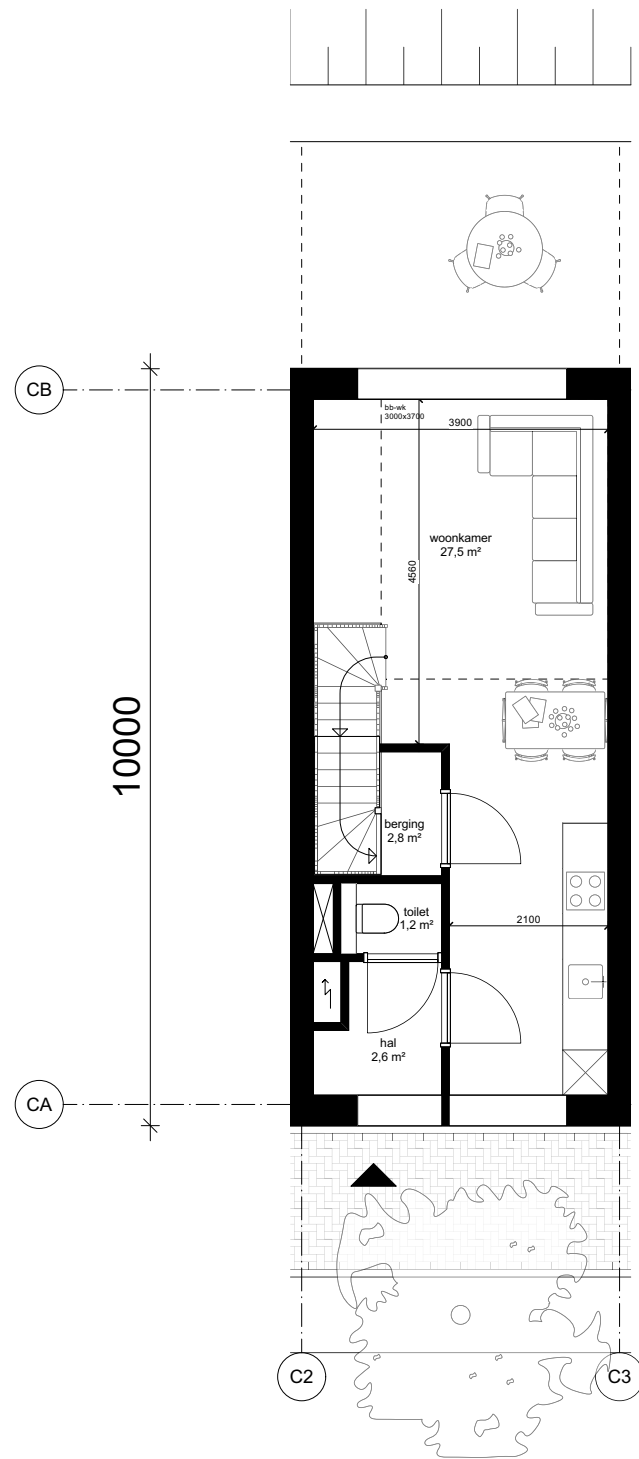
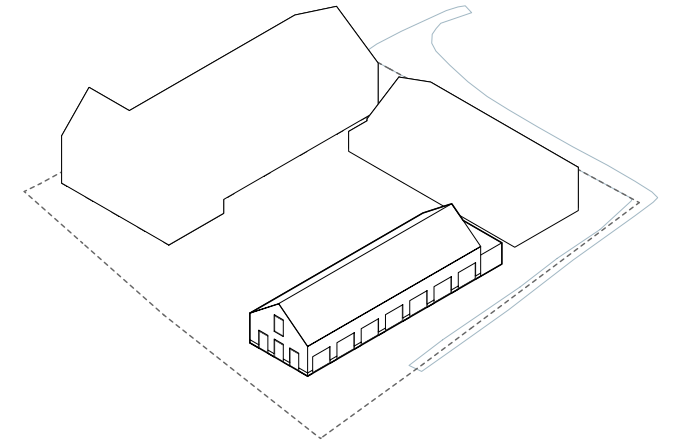


Doorsnede E-E  
Schaal: 1:100

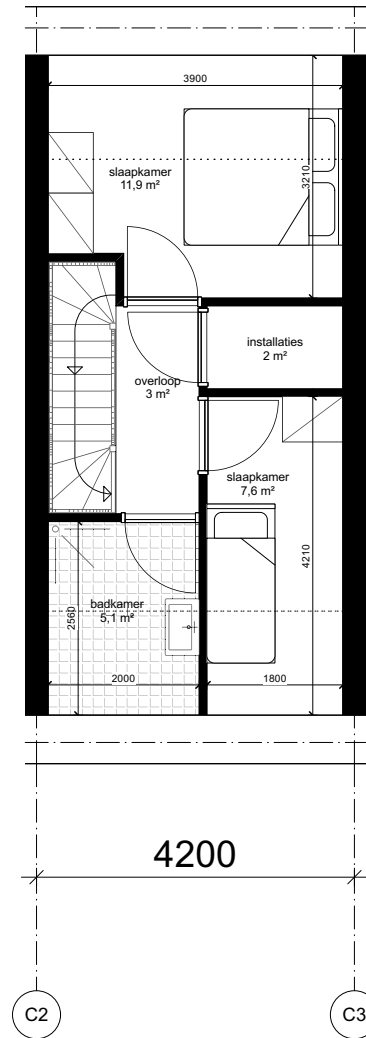
Zomerhuis - doorsnede



# Blok C - alternatief a



Begane grond  
Schaal: 1:100



Eerste verdieping  
Schaal: 1:100

...komt